

At: Gadeirydd ac Aelodau'r Pwyllgor  
Archwilio Partneriaethau

Dyddiad: 8 Mai 2015

Rhif Union: 01824 712554

ebost: dcc\_admin@denbighshire.gov.uk

Annwyl Gynghorydd

Fe'ch gwahoddir i fynychu cyfarfod y **PWYLLGOR ARCHWILIO PARTNERIAETHAU, DYDD IAU, 14 MAI 2015** am **9.30 am** yn **SIAMBR Y CYNGOR, TY RUSSELL, RHYL.**

Yn gywir iawn

G Williams  
Pennaeth Gwasanaethau Cyfreithiol a Democraataidd

## AGENDA

### 1 YMDDIHEURIADAU

### 2 ETHOL IS-GADEIRYDD

Penodi Is-Gadeirydd y Pwyllgor ar gyfer blwyddyn y cyngor 2015/16

### 3 DATGAN CYSYLLTIAD

Dylai'r Aelodau ddatgan unrhyw gysylltiad personol neu gysylltiad sy'n rhagfarnu mewn unrhyw fater a nodwyd i'w ystyried yn y cyfarfod hwn.

### 4 MATERION BRYD FEL Y'U CYTUNWYD GAN Y CADEIRYDD

Rhybudd o eitemau y dylid, ym marn y Cadeirydd, eu hystyried yn y cyfarfod fel materion brys yn unol ag Adran 100B(4) Deddf Llywodraeth Leol 1972.

### 5 COFNODION Y CYFARFOD DIWETHAF (Tudalennau 5 - 12)

Derbyn cofnodion cyfarfod y Pwyllgor Archwilio Partneriaethau a gynhaliwyd ar 19 Mawrth, 2015 (copi ynghlwm).

**6 YMGYSYLLTU Â'R GYMUNED, Y SECTOR GWIRFODDOL A'R TRYDYDD  
SECTOR YN SIR DDINBYCH** (Tudalennau 13 - 34)

Trafodaeth gyda chynrychiolwyr o Bartneriaeth Arfordirol Sir Ddinbych a Chyngor Gwasanaethau Gwirfoddol Sir Ddinbych am eu rôl wrth hybu a chefnogi ymwneud cymunedol, a gan y sector gwirfoddol a'r trydydd sector yn y sir.

**9:35am – 10:45am**

**7 CYD BWYLLGOR AR GYFER ARDAL O HARDDWCH NATURIOL  
EITHRIADOL BRYNIAU CLWYD A DYFFRYN DYFRDWY (AHNE)  
ADRODDIAD CYNNYDD 2014-15** (Tudalennau 35 - 52)

Ystyried adroddiad gan y Swyddog Ardal o Harddwch Naturiol Eithriadol (AHNE) (copi ynghlwm) sy'n amlinellu'r cynnydd a gyflawnwyd â llywodraethu'r AHNE a phrosiectau cysylltiedig.

**11:00am – 11:30am**

**Egwyl Gysur**

**8 ADOLYGIAD O DIRWEDDAU DYNODEDIG YNG NGHYMRU** (Tudalennau 53 - 78)

Ystyried adroddiad gan y Rheolwr Gwasanaethau Cefn Gwlad a Threftadaeth (copi ynghlwm) sy'n rhoi manylion ymgynghoriad Cam 2 ar yr Adolygiad o Dirweddau Dynodedig yng Nghymru.

**11:30am – 12:00pm**

**9 RHAGLEN WAITH ARCHWILIO** (Tudalennau 79 - 102)

Ystyried adroddiad gan y Cydlynnydd Archwilio (copi wedi'i amgáu) yn gofyn am adolygiad o raglen waith y pwyllgor a rhoi'r wybodaeth ddiweddaraf i'r aelodau ar faterion perthnasol.

**12:00pm – 12:20pm**

**10 ADBORTH GAN GYNRYCHIOLWYR Y PWYLLGOR**

Derbyn unrhyw ddiweddariadau gan gynrychiolwyr ar amrywiol Fyrddau a Grwpiau Cyngor

**AELODAETH**

**Y Cynghorwyr**

Y Cyngorydd Jeanette Chamberlain-Jones (Cadeirydd)

Joan Butterfield  
Meirick Davies  
Richard Davies  
Pat Jones

Y Cyngorydd Ray Bartley (Is-Gadeirydd)

Dewi Owens  
Merfyn Parry  
Bill Tasker

**COPIAU I'R:**

Holl Gynghorwyr er gwybodaeth  
Y Wasg a'r Llyfrgelloedd  
Cynghorau Tref a Chymuned

Mae tudalen hwn yn fwriadol wag

## PWYLLGOR ARCHWILIO PARTNERIAETHAU

Cofnodion cyfarfod o'r Pwyllgor Archwilio Partneriaethau a gynhaliwyd yn Ystafell Bwyllgora 1A, Neuadd y Sir, Rhuthun, Dydd Iau, 19 Mawrth 2015 am 9.30 am.

### YN BRESENNOL

Y Cynghorwyr Raymond Bartley (Is-Gadeirydd), Joan Butterfield, Jeanette Chamberlain-Jones (Cadeirydd), Ann Davies, Meirick Davies a/ac Pat Jones.

Y Cyngorydd Brian Blakeley a/ac Martyn Holland.

### HEFYD YN BRESENNOL

Cyfarwyddwr y Gwasanaethau Cymdeithasol (NS), Arweinydd Tîm Cyllid Allanol (SMJ), Cydlynnydd Archwilio (RE) a Swyddog Gweinyddol (CIW).

### 1 YMDDIHEURIADAU

Derbyniwyd ymddiheuriadau am absenoldeb oddi wrth y Cynghorwr(wyr) Richard Davies, Dewi Owens, Merfyn Parry a/ac Bill Tasker.

### 2 DATGAN CYSYLLTIAD

Datganodd y Cyngorydd Ann Davies gysylltiad personol yn Eitem rhif 3 ar y Rhaglen "Materion Brys" gan fod ei mab yng nghyfraith yn cael ei gyflogi gan Ysbyty Glan Clwyd.

### 3 MATERION BRYFEL Y'U CYTUNWYD GAN Y CADEIRYDD

Yn unol â gofynion Adran 100B(4) Deddf Llywodraeth Leol 1972, nododd y Cadeirydd ei fwriad i gynnwys y mater canlynol i'w drafod oherwydd bod angen rhoi sylw brys iddo o dan ddarpariaethau Rhan II:-

**1. Cau'r Asiantaeth Datblygu Cymunedol** – Mynegodd yr Aelodau bryderon ynglŷn â cholli'r gwasanaeth hwn ddiwedd mis Mawrth 2015. Er ei fod yn wasanaeth yn y Rhyl mae'n darparu gwasanaeth i'r sir gyfan, yn enwedig unigolion a grwpiau cymunedol yn rhai o wardiau mwyaf difreintiedig y sir. Cynghorodd Gyfarwyddwr y Gwasanaethau Cymdeithasol y gwnaed penderfyniad yn 2013 i leihau cyllid yr Asiantaeth Datblygu Cymunedol o £25 mil.

Gwnaed y penderfyniad yn rhannol i ddelio â gostyngiad yn y gyllideb, ond hefyd i ddiwallu anghenion datblygu a darparu gwasanaethau gofal cymdeithasol i ddiwallu gofynion deddfwriaeth gofal cymdeithasol newydd. Roedd trefniadau trosglwyddo ar waith yn ystod y ddwy flynedd ddiwethaf a byddai'r ddau aelod o staff yr effeithir arnynt yn symud i rolau newydd o fewn y Gwasanaeth. Roedd Swyddogion, gan gynnwys y Cyfarwyddwr wedi cyfarfod gyda Chyngor Tref y Rhyl a Phartneriaeth

Arfordirol y Rhyl i drafod dyfodol yr adeilad a dulliau amgen o ddarparu'r gwasanaethau sydd ar gael yno ar hyn o bryd.

Pwysleisiwyd bod rhai o'r gwasanaethau yr oedd y Cyngor yn eu cynnig yn yr Asiantaeth ar hyn o bryd yn wasanaethau anstatudol, ond yn ystod cyfnodau anodd roedd yn rhaid i'r Awdurdod ganolbwyntio ar wasanaethau statudol a swyddogaethau craidd. Gan fod rhai o'r gwasanaethau sy'n cael eu cynnig gan yr Asiantaeth Datblygu Cymunedol yn cael eu cynnig trwy asiantaethau eraill megis y Ganolfan Waith yna ni fyddai'n effeithlon defnyddio adnoddau cyfyngedig y Cyngor i ddyblygu'r gwasanaethau hynny. Cynghorodd y Cyfarwyddwr bod y Cyngor yn fodlon bod sefydliad 'partner' yn defnyddio'r cyfleuster ac yn defnyddio'r offer sydd yno sydd yn eiddo i'r Cyngor ar hyn o bryd. Pe bai menter gymdeithasol yn defnyddio'r adeilad gallant hwy fanteisio ar fentrau megis rhenti, trethi a chostau gwasanaeth is ac ati. Fodd bynnag, ni allai'r Cyngor ddarparu staff ar gyfer y Ganolfan gan na fyddai'r amcanion bellach yn cydymffurfio â gweledigaeth Llywodraeth Cymru a'r disgwyliadau ar gyfer gwasanaethau gofal cymdeithasol wrth symud ymlaen. Hysbysodd y Cyfarwyddwr Corfforaethol yr Aelodau bod cyfarfod arall wedi'i drefnu yn y dyddiau nesaf gyda Phartneriaeth Arfordirol y Rhyl i weld os gellir datblygu eu diddordeb yn y cyfleuster, ac mewn ymateb i gwestiynau'r aelodau fe gynghorodd y Cyfarwyddwr Corfforaethol fod y Partneriaeth yn gorff sefydliadol cofrestredig.

Roedd y Pwyllgor o'r farn fod y Rhyl yn colli gwasanaeth cymunedol gwerthfawr unwaith eto. Hysbyswyd y swyddogion bod ambell eitem yn yr Asiantaeth Datblygu Cymunedol yn eiddo i'r gymuned ac felly ni ddylid eu symud o'r cyfleuster heb ganiatâd y gymuned. Mewn ymateb i bryderon yr Aelodau ynglŷn â sut y gellir llenwi'r gwagle sy'n cael ei greu trwy gau'r Asiantaeth Datblygu Cymunedol cynghorodd y Cyfarwyddwr fod gan y sector gwirfoddol rôl bwysig yn y maes hwn gan y gallai gael cyllid i gefnogi gwasanaethau o'r fath gan y llywodraeth ganolog. Awgrymodd efallai y byddai'n ddefnyddiol i'r Pwyllgor wahodd Cyngor Gwasanaethau Gwirfoddol Sir Ddinbych a Phartneriaeth Arfordirol y Rhyl i gyfarfod yn y dyfodol i drafod eu rôl i gefnogi grwpiau cymunedol yn Sir Ddinbych yn y dyfodol.

***PENDERFYNWYD*** – gwahodd cynrychiolwyr o Gyngor Gwasanaethau Gwirfoddol Sir Ddinbych a Phartneriaeth Arfordirol y Rhyl i gyfarfod yn y dyfodol i drafod eu rôl i gefnogi cymunedau i dderbyn gwasanaethau a chyllid pan fydd gwasanaethau anstatudol y Cyngor yn cael eu tynnu'n ôl.

**2. Uned Hawliau Lles a Nyrsio Macmillan:** Mynegwyd pryderon gan yr Aelodau ynghylch argaeledd gwasanaethau Nyrsio Macmillan i drigolion Sir Ddinbych ar ôl cau'r Uned Hawliau Lles ar ddiwedd y flwyddyn ariannol gyfredol. Roeddent yn ymwybodol o wybodaeth ddiweddar oedd yn nodi bod trefniadau newydd ar gyfer mynediad i wasanaethau gofal Nyrsio Macmillan trwy Swyddfa Cyngor ar Bopeth heb eu llofnodi'n ffurfiol, felly ni fyddai'r gwasanaeth yn weithredol erbyn 1 Ebrill 2015 fel y cynlluniwyd yn wreiddiol. Cynghorodd Gyfarwyddwr y Gwasanaethau Cymdeithasol na ellir dechrau trefniadau trosglwyddo ffurfiol nes y gwneir penderfyniad gan y Cyngor Sir i dynnu gwasanaeth Uned Hawliau Lles yn ôl. Roedd trefniadau trosglwyddo ar y gweill yn

awr ac roedd y swyddogion wedi cyfarfod â'r staff y diwrnod blaenorol i gwblhau'r trefniadau. Byddai'r gwasanaeth Cyngor ar Bopeth yn raddol yn cymryd y cyfrifoldeb i ddarparu Gwasanaeth Macmillan ar gyfer Sir Ddinbych ac fe fyddent yn derbyn cyllid gan yr elusen ar ei gyfer.

**3. Gwasanaethau Llawdriniaeth Ddwys yn Ysbyty Glan Clwyd** – Mynegodd yr aelodau bryderon ynglŷn â dyfodol y gwasanaeth llawdriniaeth ddwys yn Ysbyty Glan Clwyd a chywirdeb erthygl yn y Daily Post, dyddiedig 17 Mawrth 2015, yn dilyn y sicrwydd a roddwyd gan Brif Weithredwr Bwrdd Iechyd Prifysgol Betsi Cadwaladr (BIPBC), yr Athro Trevor Purt, ynglŷn â gwasanaethau llawdriniaeth ddwys fydd ar gael yn Ysbyty Glan Clwyd yn y dyfodol.

**PENDERFYNWYD** – y dylid anfon llythyr at Brif Weithredwr BIPBC yn ceisio eglurhad ynglŷn â'r mathau o lawdriniaethau fyddai'n cael eu darparu yn Ysbyty Glan Clwyd yn y dyfodol.

#### **4 COFNODION Y CYFARFOD DIWETHAF**

Cyflwynwyd Cofnodion cyfarfod y Pwyllgor Archwilio Partneriaethau a gynhaliwyd ddydd Iau, 18 Rhagfyr 2014.

Materion yn codi:-

8. Partneriaeth y Cynllun Datblygu Gwledig – Eglurodd y Cydlynnydd Archwilio, mewn ymateb i gwestiwn gan y Cynghorydd M.Ll. Davies, mewn perthynas â dyrannu cyllid ar gyfer prosiectau gan Cadwyn Clwyd, byddai hyn yn cael ei ddarparu dan Eitem rhif 5 ar y Rhaglen.

**PENDERFYNWYD** – yn amodol ar yr uchod, derbyn a chymeradwyo'r cofnodion fel cofnod cywir.

#### **5 CYDLYNU FFRYDIAU CYLLID CYMUNEDAU**

Roedd adroddiad gan Arweinydd Tîm Datblygu Economaidd a Busnes y De oedd yn amlinellu'r sefyllfa gyfredol gyda'r Undeb Ewropeaidd (yr UE) a chronfeydd eraill sydd ar gael ar gyfer buddion Cymunedol wedi'i gylchredeg gyda'r papurau ar gyfer y cyfarfod.

Roedd yr adroddiad yn nodi'r sefyllfa gyfredol ac argaeledd ffynonellau cyllid posibl, yn amodol ar feini prawf cymhwyso, ar gyfer buddion Cymunedol. Roedd yn nodi'r gefnogaeth sydd ar gael i grwpiau Cymunedol wrth wneud cais am gyllid trwy asiantaethau allanol a rhwydweithiau cefnogaeth, ac yn darparu canllawiau ynglŷn â phrif ffynonellau'r UE a mathau eraill o gyllid sydd ar gael ar hyn o bryd.

Roedd canllaw i'r prif ffynonellau cyllid sydd ar gael ar hyn o bryd wedi'u darparu ac yn cynnwys Cyllid yr UE a Chronfeydd Strwythurol yr UE 2014-2020. Eglurwyd y byddai swm y cyllid cyfatebol yn amrywio yn ôl pob thema a phrosiect. Roedd

cyfraddau lefelau grant y rhaglen wedi'u darparu i nodi'r lefelau grant a ragwelir. Roedd amcanion buddsoddi ar gyfer rhaglenni yng Nghymru wedi'u hamlinellu yn yr adroddiad.

Hysbysodd yr Arweinydd Tîm y Pwyllgor wrth gyflwyno ei hadroddiad bod:-

- Canolbwynt rownd newydd Cyllid Ewropeaidd wedi newid. Dan y rhaglen newydd byddai llai o brosiectau lleol yn derbyn cyllid, byddai pwyslais ar brosiectau strategol mawr fyddai'n cael eu darparu naill ai yn isranbarthol, yn rhanbarthol neu hyd yn oed yn genedlaethol;
- Penodwyd Cadwyn Clwyd fel y Grŵp Gweithredu Lleol i ddarparu elfen ARWEINYDD y Cynllun Datblygu Gwledig (CDG) 2014/20, ond gan nad oedd yr Undeb Ewropeaidd wedi cymeradwyo'r CDG hyd yn hyn, ni fyddai'r cyllid ar gyfer y prosiectau'n cael ei ryddhau ac o ganlyniad roedd y staff wedi'u rhyddhau neu roeddent dan hysbysiad diswyddo. Nid oedd hyn yn sefyllfa ddelfrydol ond roedd tu hwnt i reolaeth y Cyngor;
- Roedd Cyngor Gwasanaethau Gwirfoddol Conwy wedi'u penodi yn weinyddwyr Cronfa Fferm Wynt Gwynt y Môr yn ddiweddar. Roedd hyn yn gais consortia, a oedd yn cynnwys Cyngor Gwasanaethau Gwirfoddol Sir Ddinbych a Chyngor Gwasanaethau Gwirfoddol Sir y Fflint ymysg y partneriaid eraill. Roedd y Grŵp Ymgynghorol yn awr wedi trefnu cyfarfod ar 7 Ebrill i drafod meini prawf cymhwyso prosiect a sut i symud ymlaen â dosbarthiad grant ac arian.

Mewn ymateb i gwestiynau'r Aelodau, fe gynghorodd yr Arweinydd Tîm-

- O ran Cronfa Gymunedol Gwynt y Môr roedd rhai anghysondebau ynglŷn â pha mor bell i mewn i'r arfordir y dylid dyrannu buddion y Gronfa, y rheswm dros hyn yw er bod y tyrbinau eu hunain oddi ar y lan roedd effaith weledol ar hyd yr arfordir, ac roedd y cysylltiadau a'r is-orsaf gysylltiol ar y tir, gyda'r is-orsaf ger Llanelwya, a
- Fel rhan o waith Grŵp Ymgynghorol Gwynt y Môr roedd gan swyddogion Sir Ddinbych berthynas waith dda gyda'r holl bartneriaid, gan gynnwys Cyngor Gwasanaethau Gwirfoddol Conwy. Hyd yma roedd Sir Ddinbych wedi'i gynrychioli ar Grŵp Ymgynghorol Gwynt y Môr gan swyddogion, ond nawr bod gweinyddydd y gronfa wedi'i benodi mae'n debyg y byddai'r aelodaeth a'r strwythurau yn cael eu hadolygu;
- Roedd symiau o arian gohiriedig yn cael eu gweinyddu gan nifer o adrannau'r Cyngor e.e. y Parth Cyhoeddus, Cynllunio a Gwarchod y Cyhoedd, Gwasanaethau Priffyrdd a'r Amgylchedd, yn dibynnu ar y rheswm pam fod y symiau gohiriedig wedi'u dyrannu. Cadarnhaodd bod holl symiau gohiriedig manau agored wedi'u hymrwymo;
- Gofynion cyllid cyfatebol ar gyfer y rownd newydd o gyllid Ewropeaidd fyddai: Cronfeydd Strwythurol: 75% cyllid grant, 25% cyllid cyfatebol; CDG: 80% cyllid grant, 20% cyllid cyfatebol. Nid oedd arian cyllid cyfatebol wedi'i ddyrannu gan y Cyngor eto. Byddai dyraniad cyllid cyfatebol yn cael ei ystyried ar rinweddau pob prosiect. Roedd un prosiect wedi'i gyflwyno hyd yn hyn, roedd hyn yn ymwneud â phrosiect sgiliau addysg ar gyfer myfyrwyr 14 i 19 mlwydd oed oedd mewn perygl o adael byd addysg. Byddai elfen cyllid cyfatebol y prosiect ar ffurf staff y Cyngor yn prynu darpariaeth cwricwlwm amgen i leihau'r risg o adael byd addysg;
- Byddai cefnogaeth i gael gwybodaeth a derbyn cyllid ar gyfer prosiectau yn y dyfodol ar gael trwy Gyngor Gwirfoddol Cymru, oedd yn darparu cefnogaeth



benodol ar gyfer y math hwn o waith. Byddai gwybodaeth ar gael ar wefan GwerthwchiGymru hefyd;

- Roedd dadansoddiad bwlch yn cael ei gyflawni i geisio nodi meysydd o wasanaethau anstatudol fyddai'n elwa o gyllid CDG yn y dyfodol. Eglurwyd y byddai gan y Cynghorwyr rôl bwysig wrth symud ymlaen fel cyswllt rhwng cymunedau a ffrydiau ariannu, gan y byddent yn allweddol i gyfeirio grwpiau cymunedol ac ati at CGGSDd / Cyngor Gwirfoddol Cymru, i gael cyngor a chefnogaeth;

- Nid oedd yr holl gronfeydd cymunedol yn darparu cyllid datblygu at ddibenion cwmpasu prosiectau, fodd bynnag roedd cyllid datblygu ar gael ar gyfer rhai prosiectau'r Loteri FAWR;

- Roedd rhai prosiectau isadeiledd mawr sy'n cael eu noddi gan Fwrdd Uchelgais Economaidd Gogledd Cymru, megis trydaneiddio'r rheilffordd yng Ngogledd Cymru, neu'r morlyn llanw arfaethedig, y tu hwnt i gwmpas Cronfeydd Strwythurol Ewrop oherwydd eu maint a'r gost;

- Nid oedd yn ymwybodol o gyllid cymunedol sydd ar gael i gynorthwyo rhai sy'n prynu tai am y tro cyntaf i gael mynediad i'r farchnad dai, ond byddai'n holi'r Landlordiaid Cymdeithasol Cofrestredig i weld os oeddent yn cynnig cyllid i'r diben hwn, a byddai'n gwirio i weld os oedd y rheolau yn ymwneud â symiau gohiriedig ar gyfer gofodau gwyrdd wedi newid.

Roedd y Pwyllgor yn awyddus bod Aelod Etholedig yn cael ei benodi i gynrychioli Sir Ddinbych ar gorff olynol Bwrdd Ymgynghorol Cronfa Gymunedol Gwynt y Môr gan fod Gweinyddydd y Gronfa wedi'i benodi yn awr. Cytunwyd hefyd y dylid nodi, yn y gwahoddiad i CGGSDd fynychu cyfarfod o'r Pwyllgor, dymuniad yr Aelodau i drafod rôl CGGSDd gyda'i gynrychiolwyr i gynorthwyo cymunedau i dderbyn y ffrydiau amrywiol o gyllid cymunedol allanol sydd ar gael iddynt.

Yn dilyn trafodaeth bellach:-

### **PENDERFYNWYD -**

*(a) derbyn yr wybodaeth, yn amodol ar yr arsylwadau uchod;*

*(b) nodi rôl yr Aelodau yn y gymuned i nodi prosiectau a chodi ymwybyddiaeth o ffynonellau cyllid sydd ar gael i grwpiau cymunedol gyda'r diben o wneud y gorau o'r buddion i'r cymunedau a chefnogi darpariaeth blaenoriaethau corfforaethol a Chynllun Corfforaethol y Cyngor;*

*(c) argymhell y dylid cyflwyno sylwadau i Grŵp Ymgynghorol Cronfa Gymunedol Gwynt y Môr yn nodi y dylai bod Aelod Etholedig ar y corff perthnasol fydd yn goruchwyllo dyfarniad cyllid grant yn y dyfodol; a*

*(d) bod cyfarfod gyda Chyngor Gwasanaethau Gwirfoddol Sir Ddinbych yn y dyfodol yn cynnwys trafodaeth ar rôl y sefydliad i gynorthwyo a chefnogi grwpiau cymunedol i gael cyngor ynghylch ffrydiau cyllid cymunedol allanol.*

## **6 RHAGLEN WAITH ARCHWILIO**

Roedd copi o adroddiad gan y Cydlynnydd Archwilio, a oedd yn gofyn i'r Pwyllgor adolygu a chytuno ar ei Raglen Gwaith i'r Dyfodol ac yn rhoi diweddariad ar faterion perthnasol, wedi ei ddsbarthu gyda'r papurau ar gyfer y cyfarfod.

Roedd copi o 'ffurflen o gynnig gan Aelod' wedi'i gynnwys yn Atodiad 2 ac roedd manylion y ffurflen wedi'u darparu gan y Cydlynnydd Archwilio. Ni fydd unrhyw eitemau'n cael eu cynnwys ar raglen gwaith i'r dyfodol heb lenwi 'ffurflen gynnig ar gyfer archwilio' a derbyn cymeradwyaeth i'w gynnwys ar y rhaglen gan y Pwyllgor neu'r GCIGA. Eglurodd y Cydlynnydd Archwilio y byddai cymorth i lenwi'r ffurflenni ar gael os oes angen. Roedd Rhaglen Gwaith i'r Dyfodol y Cabinet wedi'i chynnwys yn Atodiad 3, ac roedd tabl yn rhoi crynodeb o'r penderfyniadau Pwyllgor diweddar a'r cynnydd gyda'u gweithrediad, wedi'i gynnwys yn Atodiad 4.

Bwrdd Iechyd Prifysgol Betsi Cadwaladr:-

Gan fod yr Athro Trevor Purt, Prif Weithredwr Bwrdd Iechyd Prifysgol Betsi Cadwaladr, wedi mynychu sesiwn Frifffio'r Cyngor ar 16 Mawrth 2015 i drafod cynllun tair blynedd y Bwrdd gyda'r holl Gynghorwyr, penderfynwyd ei bod ychydig yn gynnar gwahodd cynrychiolwyr BIPBC i'r Pwyllgor ar 30 Ebrill i drafod cynnydd hyd yn hyn. Cytunodd yr Aelodau y dylid gohirio'r cyfarfod gyda chynrychiolwyr y Gwasanaeth Iechyd tan 17 Medi 2015, gyda'r 3 Medi fel dyddiad amgen os oedd angen.

Cytunodd yr Aelodau y dylid penodi'r Cynghorydd J.Butterfield fel cynrychiolydd y pwyllgor ar Grŵp Herio'r Gwasanaeth Addysg. Roedd Atodiad 5 yn cynnwys y rhestr ddiweddaraf o gynrychiolwyr archwilio ar y Grwpiau Herio Gwasanaethau.

Rhoddodd y Pwyllgor ystyriaeth i'w Raglen Gwaith i'r Dyfodol drafft ar gyfer cyfarfodydd y dyfodol, Atodiad 1, a chytunwyd ar y newidiadau a'r ychwanegiadau canlynol:-

30 Ebrill 2015:-

Eglurodd y Cydlynnydd Archwilio bod Prif Swyddog Cefn Gwlad: Gwasanaethau Warden wedi nodi na fyddai'n gallu mynychu'r cyfarfod a drefnwyd ar 30 Ebrill 2015 i gyflwyno adroddiad ar Gyd-Bwyllgor yr AHNE, a chytunwyd y dylid canslo'r cyfarfod. Cytunodd y Pwyllgor y bydd cyfarfod yn cael ei drefnu ar gyfer naill ai'r 14 neu'r 21 Mai 2015, yn dibynnu ar argaeledd y rhai sydd angen bod yn bresennol, er mwyn ystyried adroddiad ar Gyd-Bwyllgor yr AHNE. Cytunwyd hefyd y dylid gwahodd cynrychiolwyr o Gyngor Gwasanaethau Gwirfoddol Sir Ddinbych a Phartneriaeth Arfordirol y Rhyl i'r cyfarfod i drafod eu rôl i gefnogi cymunedau i dderbyn gwasanaethau a chyllid pan fydd gwasanaethau anstatudol y Cyngor yn cael eu tynnu'n ôl. Mewn ymateb i gwestiynau gan yr Aelodau, darparwyd fanylion ynglŷn ag Aelodaeth Partneriaeth Arfordirol y Rhyl i'r Pwyllgor.

30 Gorffennaf 2015:-

- Eglurodd y Cydlynnydd Archwilio bod cais gan swyddog i'r Pwyllgor ystyried adroddiad ar Glwstwr Cymunedau'n Gyntaf Sir Ddinbych wedi'i gymeradwyo a'i drefnu ar y rhaglen gwaith i'r dyfodol ar gyfer 30 Gorffennaf 2015.

Roedd Grŵp Cadeiryddion ac Is-gadeiryddion Archwilio, ar 19 Chwefror 2015, wedi ystyried Papur Gwyn diweddaraf Llywodraeth Cymru ar Ddatganoli, Democratiaeth a Darpariaeth – Diwygio Llywodraeth Leol: Pŵer i Bobl Leol. Roedd Pennod 8 y Papur Gwyn ‘Cryfhau Rôl Adolygu’, yn gosod cynigion Llywodraeth Cymru ar gyfer archwilio, a darparodd y cydlynnydd archwilio grynodeb byr o’r trafodion.

Byddai'r Adroddiad Blynyddol ar weithgareddau'r Pwyllgorau Archwilio yn ystod y flwyddyn yn cael ei gyflwyno i gyfarfod blynyddol y Cyngor ym mis Mai. Roedd ymarfer gwerthuso Archwilio wedi'i gyflawni ac roedd holiadur drafft wedi'i gylchredeg i aelodau archwilio, ac i grŵp ehangach gan gynnwys yr holl Gynghorwyr ac aelodau'r Uwch Dîm Arweinyddiaeth. Gofynnodd y Cydlynnydd Archwilio bod yr holiaduron yn cael eu dychwelyd cyn gynted â phosibl.

***PENDERFYNWYD*** - yn amodol ar yr uchod, cymeradwyo'r Rhaglen Gwaith fel y caiff ei hamlinellu yn Atodiad 1 yr adroddiad.

## **7 ADBORTH GAN GYNRYCHIOLWYR Y PWYLLGOR**

Ni dderbyniwyd unrhyw adroddiadau gan gynrychiolwyr y pwyllgor.

Daeth y Cyfarfod i ben am 11.55 a.m.

Mae tudalen hwn yn fwriadol wag

# DENBIGHSHIRE COASTAL PARTNERSHIP



Charitable  
Body Oversees

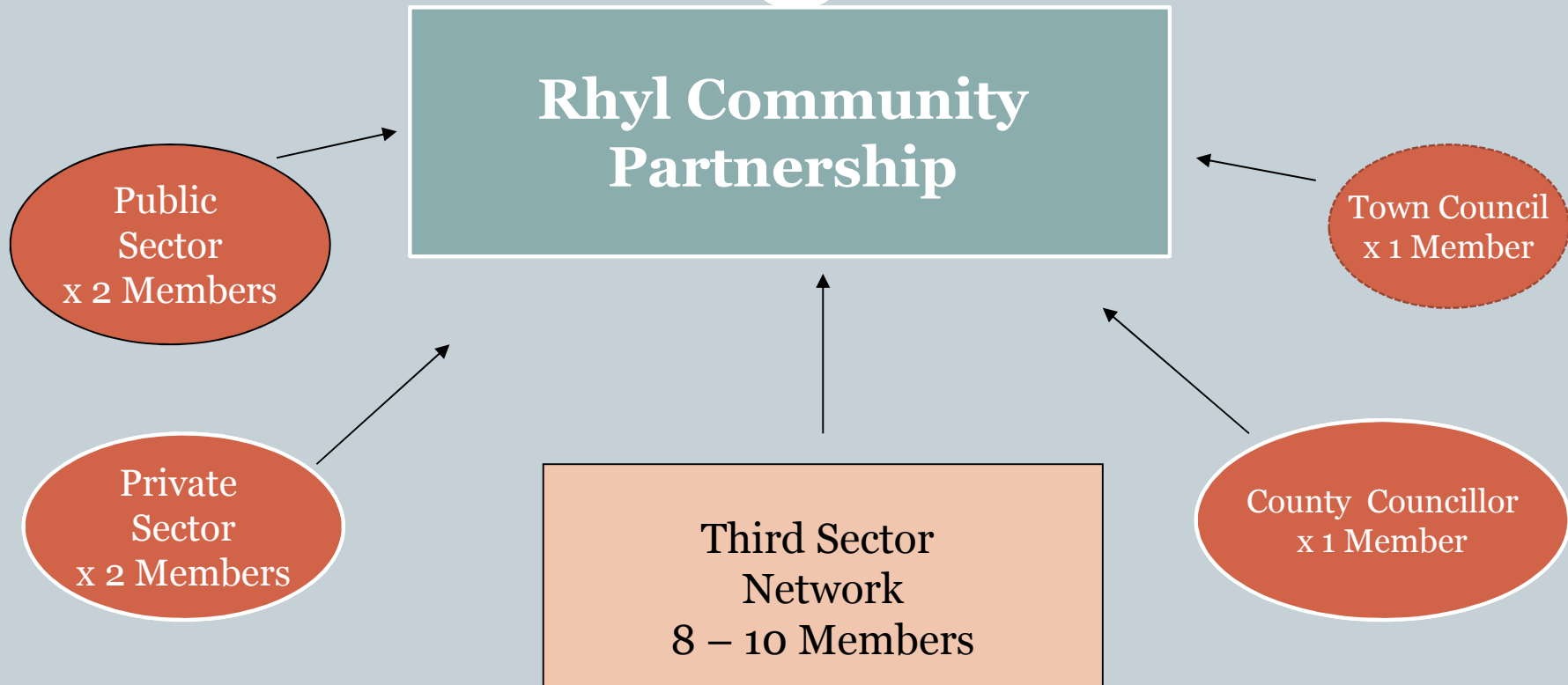
Rhyl Community  
Partnership

Prestatyn & Meliden  
Community  
Partnership

# RHYL COMMUNITY PARTNERSHIP



Tudalen 14



# RHYL COMMUNITY PARTNERSHIP

## WHAT DO WE DO?



We aim to bring together all sections of the community in an attempt to work in partnership to:

- Avoid duplication
- Share resources
- Share ideas
- Encourage joint working on integrated work projects

# RHYL COMMUNITY PARTNERSHIP

SINCE 2005

THE PARTNERSHIP HAS BEEN RESPONSIBLE FOR MANAGING AND  
ADMINISTERING THE RWE INNOGY UK LTD COMMUNITY FUND  
WHICH AMOUNTS TO £60,000 ANNUALLY



Applications for this fund are invited from eligible community groups / voluntary organisations using the following criteria

- Health, Social Care & Well Being- *Caring communities & healthy future*
- Housing - *A Place to Live*
- Environment and Transport - *A Clean and pleasant land*
- Community Safety - *Creating a safe and secure environment*
- Economic Prosperity & Tourism - *Developing business & enterprise*

Upwards of 350 groups have secured funding in support of projects which benefit the wider community



# RHYL COMMUNITY PARTNERSHIP

EXAMPLES OF A WIDE RANGE OF GROUPS  
WHO HAVE BENEFITED FROM  
THE COMMUNITY FUND



- Normandy Veterans Association
- 8<sup>th</sup> Rhyl Guides
- Benefits Advice Shop
- Botanical Gardens Enterprises
- British Heart Foundation
- Cruse Bereavement Care
- Friends of the Pavilion Theatre
- Glan Morfa Cycling Association
- Rhyl Tynwydd Townswomen's Guild
- Rhyl Music Club
- Soroptimist International Rhyl & District
- SPAN –Disabled Children Respite Care
- Rhyl in Bloom
- NW Women's Centre
- Rhyl Visionaires
- Rhylcreate
- Rhyl Business Group
- West Rhyl Community Land Trust
- Rhyl Raptors Wheelchair Basketball
- Parkview Neighbourhood Watch
- Chat Away Coffee Club
- Hearing Aid – Hear to Help
- Menter Iaith Sir Ddinbych
- NW Superkids
- Marsh Community Association
- Playdays Playgroup

# RHYL COMMUNITY PARTNERSHIP PRESENTATION EVENING



# RHYL COMMUNITY PARTNERSHIP

## NEW CHALLENGES



- Current economic challenges facing all local authorities poses a real challenge for the community in the future
- Increased need for third sector organisations to take on non statutory service delivery
- Commitment made in the financial year 2014-2015 to fund a proportion of the cut in the DCC Community Development Agency budget
- Developing, supporting and sustaining the community / voluntary sector through the provision of a unique practical Resource Centre, which is not currently available elsewhere within the county
- Promote resilience within the community through empowerment to identify needs and problems, seeking suitable solutions and playing an active role in their community, maximising and realising their full potential.

# RHYL COMMUNITY PARTNERSHIP

## THE FUTURE



- Continue to administer the RWE Innogy UK Ltd Community Fund
- Support Community Groups to secure other grant funding
- Ensure sustainability of the Community Resource Centre
- Further encourage a cohesive community with the skills and expertise to fully participate in the future of Rhyl
- Recognise a continually evolving and changing society and the need for diversification



# A Third Sector Sector Perspective

**John Watkin**

# Role of the Third Sector

“Third Sector plays a vital role in improving the lives of people across Wales by releasing the energy and skills of ordinary people. Voluntary organisations provide services that the public and private sectors often cannot”

Leighton Andrews, Deputy Minister for Regeneration  
Nov 29 2007.

# Voluntary Action



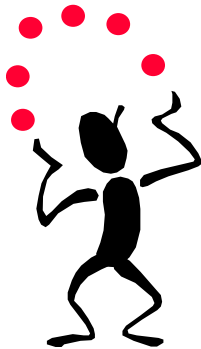
Ideas into  
Action



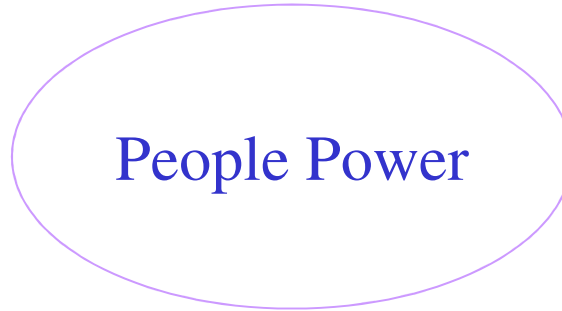
Helping  
Ourselves



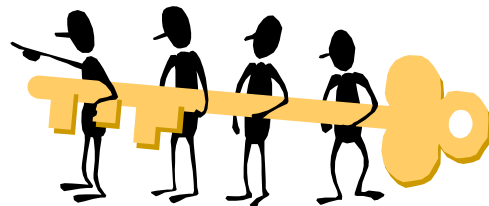
Helping Others



Sharing Skills

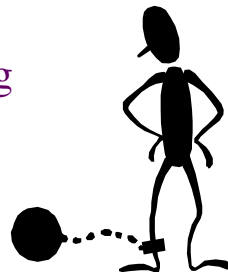


People Power



Improving our Community

Protecting  
Rights

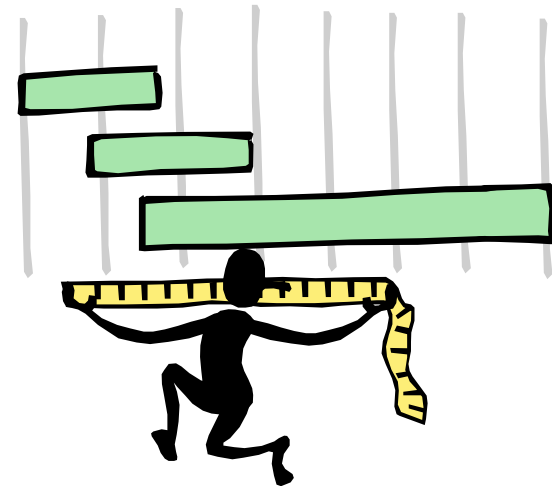


Making  
Changes



# The Third Sector in Denbighshire

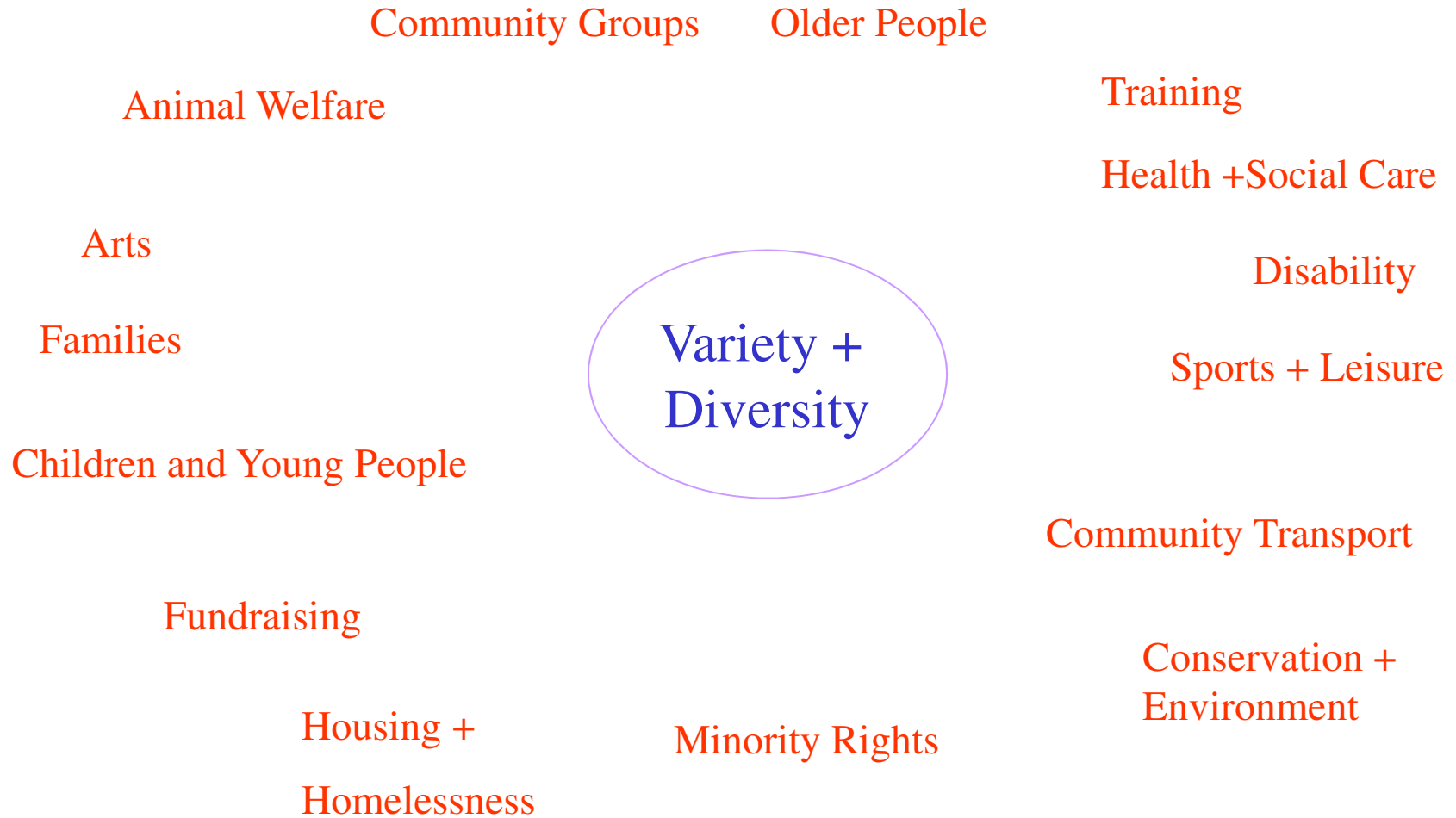
- Over 1,500 Charities, Voluntary, Community Groups, Social Enterprises, Cooperatives and Housing Associations.
- 4,500 Staff
- 20,000 Volunteers and Trustees
- £70 million plus Annual Income





# What Does the Third Sector Do?

Tudalen 25



# Why Partnerships?

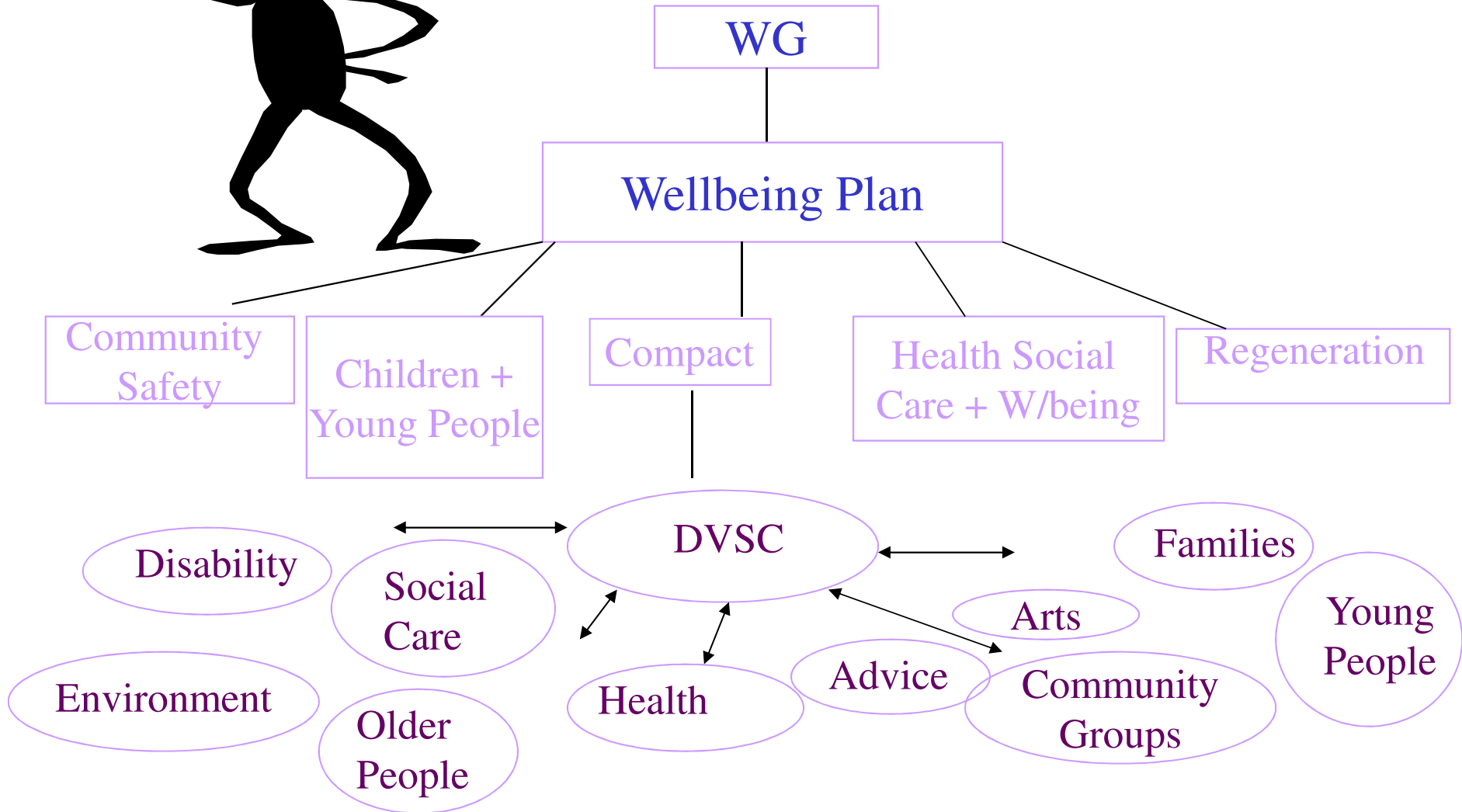
- Welsh Government
- Cooperation rather than Competition
- Better Way to Plan
- Better Use of Resources – Less Duplication
- More Inclusive



# Partnership Map



Tudalen 27



# DVSC Role



# What does DVSC do to help Third Sector

- Volunteer recruitment and placement
- Funding advice
- Low cost training courses
- Payroll / accounting service
- Social Enterprise support
- Representation and lobbying
- Governance, constitutional advice
- Charity registration advice
- Involvement in consultations
- Room and desk space hire
- B2C business brokerage scheme

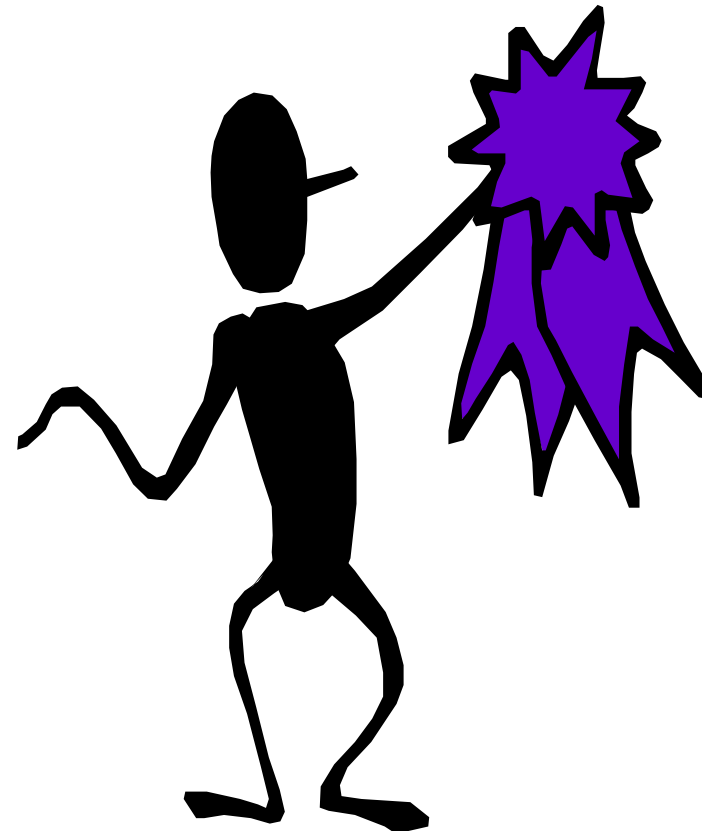
# Challenges for the Third Sector

- ❖ Representation - Elected - Appointed
- ❖ Diversity - Size - Autonomy
- ❖ Capacity - Time - Skills - Resources
- ❖ Confidence and Competence
- ❖ Communication and Consultation
- ❖ Power and Influence



# Making Partnerships Work

- ✓ Shared Goals
- ✓ Clear Purpose
- ✓ Trust and Respect
- ✓ Honesty
- ✓ Mutual Understanding
- ✓ Positive Relationships
- ✓ Shared Power
- ✓ Shared Resources
- ✓ Effective Communication

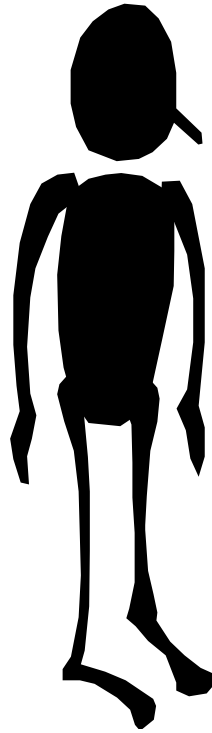


# Making the Change

Tudalen 32



Child



Adult

To



Adult



Adult



# What Next?

- What Can the Third Sector Do?
- What Can the Local Authority Do?
- What Can the Local Health Board Do?
- What Can Welsh Government?



# Over to You!

Thank you



<b>Adroddiad i'r:</b>	<b>Pwyllgor Archwilio Partneriaethau</b>
<b>Dyddiad y Cyfarfod:</b>	<b>14 Mai 2015</b>
<b>Aelod/Swyddog Arweiniol:</b>	<b>Aelod Arweiniol Hamdden, Ieuenctid Twristiaeth a Datblygu Gwledig/Swyddog AHNE</b>
<b>Awdur yr Adroddiad:</b>	<b>Swyddog AHNE</b>
<b>Teitl:</b>	<b>Adroddiad Cynnydd 2014-15 Cyd-bwyllgor ar gyfer Ardal o Harddwch Naturiol Eithriadol Bryniau Clwyd a Dyffryn Dyfrdwy (AHNE)</b>

---

## 1. Am beth mae'r adroddiad yn sôn?

Mae'r Ardal o Harddwch Naturiol Eithriadol Bryniau Clwyd a Dyffryn Dyfrdwy (AHNE) yn ymestyn o Brestatyn yn y Gogledd i Gastell Y Waun yn y De; mae'n cynnwys trefi atyniadol Llangollen a Chorwen ac yn cwmpasu 390 cilomedr sgwâr o siroedd Wrecsam, Sir y Fflint a Sir Ddinbych. Map (Atodiad 1). Mae'r mwyaf o 5 AHNE yng Nghymru ac mae'n cael ei ddiogelu'n genedlaethol a rheolir yn lleol.

O 1996 tan fis Tachwedd 2014 roedd yr AHNE yn cael ei rheoli gan Gydbwyllgor Cynghori a Chydbwyllgor Ymgynghorol Interim (CBI), cafodd hwn ei ddisodli gan Gydbwyllgor y tri awdurdod lleol cyfansoddol. Cyfarfu am y tro cyntaf ar 14 Tachwedd 2014 ac yna penodwyd y Bartneriaeth AHNE (tebyg i'r CBI gynt) sy'n cwrdd am y tro cyntaf yfory, 15fed Mai 2015.

## 2. Beth yw'r rheswm dros lunio'r adroddiad hwn?

Cytunwyd mewn cyfarfod Pwyllgor Archwilio Partneriaethau blaenorol y byddai Aelod Arweiniol a'r Swyddog AHNE yn rhoi diweddariad i Bwyllgor Archwilio Partneriaethau Sir Ddinbych ar gynnydd dros y 12 mis cyntaf.

## 3. Beth yw'r Argymhellion?

Bod y Pwyllgor yn archwilio, rhoi sylwadau ac yn cefnogi'r cynnydd sydd wedi'i wneud ar lywodraethu AHNE a'r prosiectau a gyflawnwyd yn ystod y 12 mis cyntaf.

## 4. Manylion yr Adroddiad

### Llywodraethu

Mae'r Cydbwyllgor wedi cwrdd ddwywaith yn y 12 mis diwethaf ym mis Tachwedd 2014 a mis Chwefror 2015, y tro cyntaf yn Rhuthun a'r ail waith yn Wrecsam. Mae'r trydydd cyfarfod ar 26 Mehefin yn yr Wyddgrug. Yn y cyfarfod cyntaf penodwyd Cadeirydd y Cydbwyllgor, y Cynghorydd Hugh Jones o Gyngor Bwrdeistref Sirol Wrecsam (CBSW) ac Is-Gadeirydd y Cynghorydd Huw Jones Cyngor Sir Ddinbych (CSDd).

Cytunodd y Cydbwyllgor i sefydlu Partneriaeth AHNE yn ei gyfarfod cyntaf fel y nodir yn y cytundeb cyfreithiol. Mae gan Aelodau a benodwyd i'r bartneriaeth brif gyfrifoldeb i sicrhau bod y bartneriaeth yn hyrwyddo dibenion statudol a nodir yn y Ddeddf CROW 2000. Dylent ystyried eu hunain yn gyntaf oll fel aelodau o'r Bartneriaeth, gyda dyletswydd i weithredu er budd gorau'r bartneriaeth a'r AHNE, yn hytrach na chynrychiolwyr o unrhyw sefydliad neu ddiddordeb. Cytunwyd ar 16 Aelod y Bartneriaeth (sy'n eithrio'r 9 Aelod Partneriaeth ALI) yn is-grŵp y Cydbwyllgor ar 19 Mawrth 2015.

Cytunodd y Cydbwyllgor ar y canlynol yn ei ddau gyfarfod:-

- ei Gyfansoddiad a'i Gytundeb Cyfreithiol
- hysbysebu a phenodi Partneriaeth AHNE
- ei Gyllideb
- ymgynghori ar y Cynllun Rheoli Drafft
- i dderbyn y Rhaglen Gwaith i'r Dyfodol (Atodiad 2)

Mae hefyd wedi derbyn adroddiadau ar y canlynol:-

- Cofnodion CBY interim
- Prosiect Newid Hinsawdd
- Strategaeth Twristiaeth Gynaliadwy

O ganlyniad i hynny ac o bosibl i gydnabod y berthynas waith agosach hon a phwysigrwydd yr AHNE o gwmpas Safle Treftadaeth y Byd, mae Cadeirydd y Bartneriaeth AHNE a Swyddog AHNE wedi'u penodi i Fwrdd Safle Treftadaeth y Byd.

Mae neges ariannu gadarnhaol iawn wedi'i chyfeirio gan CBSW. Cynyddodd eu cyfraniad o £5,000 y cytunwyd ar gyfer 2014-15 i £12,000 a'u cyfraniad 2015-16 i £19,000.

### **Prosiect o fewn a gerllaw'r AHNE**

Mae'n hanfodol bwysig bod yr AHNE yn cysylltu i ardaloedd cyfagos, fel y gall y rhai sy'n byw yno fwynhau'r manteision a chyfrannu at y dirwedd o harddwch naturiol eithriadol, gyda hyn mewn golwg mae'r AHNE yn canolbwyntio'n benodol ar ddau faes gwaith ar gyfer y dyfodol: - Strategaeth Gwirfoddolwyr a Strategaeth Estyn Allan bydd y rhain o fudd i'r AHNE a'r boblogaeth sy'n byw o amgylch.

Dau brosiect mawr yn y Gogledd o'r AHNE a'r ardal o'i chwmpas oedd y Prosiect Lyncs Gwyrdd (Atodiad 3) a'r Ganolfan Ragoriaeth Beicio (Atodiad 4), sydd ill dau â chysylltiad agos â'r AHNE, a'r swyddogion cefn gwlad a leolir yn y Rhyl.

Cyfrannodd Llywodraeth Cymru dros £70,000 i Gronfa Twristiaeth Cynaliadwy AHNE. Dyma flas o'r 19 o brosiectau a gefnogwyd gan y Gronfa:-

- Cynlluniau Grant Cefn Gwlad i Ffermwyr, 9 prosiect wedi'u cynnal ar ffermydd ar wahân, gwella gwrychoedd; 1,760 metr o wrychoedd wedi gwella.
- Atgyweiriwyd waliau yn Llanarmon-yn-Iâl yn gweithio gyda grwpiau a busnesau lleol, 130 metr o waliau sych wedi eu hatgyweirio.

- Gwelliannau i Neuadd Bentref Pentredwâr.
- Tir ysgol Gwernymynydd ar gyfer bywyd gwyllt.
- Gŵyl Gerdded Prestatyn.
- Prosiect Teuluoedd Plas Madog.
- Brandio cig oen, cig oen bryniau Clwyd nawr ar gael yn y neuadd fwyd yn Tweedmill.
- Neuadd Bentref Pantymwyn.
- Ceidwaid Ifanc.
- Gŵyl Gerdded Llangollen.
- Llwybr Bwyd AHNE.
- Prosiect Ieuenctid Plas Madog.
- Corwen yn Croesawu'r Trên.
- Cwt y Bugeiliaid Moel Famau, mae'r cyfleuster hwn bellach yn darparu lluniaeth draddodiadol a chyflogi pobl leol ar Moel Famau.
- Cludiant cymunedol, gall cludiant fod yn rhwystr i grwpiau fynd allan, bwriad yr arian hwn oedd i helpu grwpiau gael mynediad i'r AHNE.

Mae'r Tîm AHNE wedi arwain a chefnogi nifer o brosiectau mawr eraill gan gynnwys:-

- Corwen yn Croesawu'r Trên – mae'r tîm AHNE wedi cyflawni gwaith ar y cyd â'r rheilffordd, busnesau lleol a defnyddwyr trenau i gyflawni nifer o fentrau. Roedd y rhain yn cynnwys lansiad swyddogol yr estyniad i'r rheilffordd. Presenoldeb AHNE mewn digwyddiad mawreddog rheilffordd. Busnes Corwen yn hysbysebu ar y plattform dros dro. Datblygu deunydd hyrwyddo a swfenîrs, fel cardiau post, mygiau a phlaciau. Gosod meinciau newydd ar y llwybr rhwng y rheilffordd a'r dref, ac yng nghoetir Coed Pen y Pigyn, i ddarparu gwell cyfleoedd i fwynhau arhosiad byr yng Nghorwen. (gweler y daflen)
- Gwaith adnewyddu toiledau Llandysilio a gwelliannau i'r maes parcio, dehongli a mynediad at Raeadr Bwlch yr Oernant.
- Cyfrannu at adfer Pont Gadwyn.
- Gweithio ar wella mynediad i Dŵr y Jiwbilî a gwelliannau i ddehongliad (gweler y daflen)
- Drafftio SEA, Adroddiad AHNE, Cynllun Rheoli a Chynllun Gweithredu.
- Mabwysiadu Strategaeth Twristiaeth Gynaliadwy 2015-20 ac fel rhan o'r cynllun gweithredu dyfarnu bathodyn AHNE i 5 o weithredwyr gweithgaredd yn yr AHNE.
- Llwyddodd prosiect graddfa tirwedd Alun a Chwiler i gael arian grant gan WREN ac mae staff wedi parhau i gefnogi gweithrediad y prosiect drwy swyddog prosiect Ymddiriedolaeth Bywyd Gwyllt Gogledd Cymru.

## 5. Sut mae'r penderfyniad yn cyfrannu at y Blaenoriaethau Corfforaethol?

- **Economi** - nid oes unrhyw amheuaeth bod economi twristiaeth wledig yn chwarae rhan allweddol yn llwyddiant awdurdodau gwledig; mae'r AHNE yn cefnogi'r nod hwn drwy gyflawni prosiectau a phartneriaethau.
- **Iechyd a Lles** – Caiff yr ymwelwyr a'r trigolion eu hannog i gymryd rhan mewn digwyddiadau awyr agored o addysg cerdded, beicio i ddiwyddiadau iechyd

penodol. Yn y dyfodol bydd un agwedd o waith yn canolbwyntio ar brosiect cynhwysiad ar addysg ar gyfer ardaloedd eraill o Ogledd Cymru a'r Gogledd Orllewin.

- **Cymuned** - Yn y blynyddoedd diwethaf mae Llywodraeth Cymru wedi chwarae rhan ganolog yn cefnogi AOHE trwy eu Cronfa Datblygu Cynaliadwy.

## **6. Faint fydd hyn yn ei gostio a sut y bydd yn effeithio ar wasanaethau eraill?**

Sir Ddinbych yw'r Awdurdod Arweiniol ar gyfer yr AHNE fel ag y bu ers ailstrwythuro llywodraeth leol ym 1996. Bydd yn parhau i fod yn Awdurdod Arweiniol ar gyfer y Cyd-bwyllgor; ac o ganlyniad bydd yn darparu'r swyddogion canlynol ar gyfer y Cyd-bwyllgor: yr Ysgrifennydd a'r Trysorydd. Cynhelir cyfarfodydd y Cyd-bwyllgorau ym mhob Awdurdod yn eu tro; bydd yr Awdurdod a fydd yn cynnal y cyfarfod yn darparu gwasanaeth ysgrifennydd ar gyfer y cyfarfod hwnnw. Gwasanaethau'r Gyfraith a Democrataidd fydd yn bennaf gyfrifol am y costau hyn.

Bydd Sir Ddinbych yn darparu llinell gyllid ar wahân ac yn adrodd i'r Pwyllgor. Fel gyda holl Gyllidebau Cyd-bwyllgor bydd y gyllideb yn cael ei harchwilio ar wahân. Mae'r rhain yn gostau i Gyllid a Chefn Gwlad.

O ran cyllideb, mae'r cyllid presennol i'w gweld yn y cytundeb cyfreithiol. Dros y pum mlynedd nesaf bydd y gyllideb, trwy drafodaeth, yn deg rhwng y tri Awdurdod.

## **7. Beth yw prif gasgliadau'r Asesiad o Effaith ar Gydraddoldeb (AEC) a gynhaliwyd ar y penderfyniad? Dylai'r templed AEC wedi'i lenwi gael ei atodi fel atodiad i'r adroddiad.**

Gweler Atodiad 5

## **8. Pa ymgynghori a wnaed â'r Pwyllgorau Archwilio ac eraill?**

Ymgynghorodd y Swyddog AHNE â'r Pwyllgor Archwilio Partneriaethau yn 2014 ar y trefniadau llywodraethu newydd. Mae'r Cyd-bwyllgor yn ôl ei natur yn bartneriaeth a fydd yn arwain ar ymgynghori a gweithio gyda'r Bartneriaeth AHNE a sefydliadau eraill.

## **9. Datganiad y Prif Swyddog Cyllid**

Adroddwyd am sefyllfa ariannol y Cyd-bwyllgor i bob un o'r cyfarfodydd CB a gynhaliwyd hyd yma. Mae'r cyfarfodydd wedi darparu fforwm i archwilio incwm a gwariant y Cyd-bwyllgor a hefyd i gymeradwyo'r gyllideb yn ffurfiol ar gyfer 2014/15 a 2015/16. Mae gwaith yn mynd rhagddo ar hyn o bryd i gynhyrchu cyfrifon terfynol ar gyfer y Cyd-bwyllgor sy'n cynnwys cynhyrchu datganiadau ariannol ar wahân i'r Awdurdod Lleol. Bydd y datganiadau ariannol ar gyfer 2014/15 yn cael eu cyflwyno i'r cyfarfod nesaf ym mis Mehefin ar gyfer cymeradwyaeth ffurfiol a bydd nodyn ynghylch y datganiadau yn Natganiad Cyfrifon CSDd. Mae cynnydd yn y cyfraniadau blynyddol gan Gyngor Bwrdeistref Sirol Wrecsam wedi'i nodi a'i groesawu.

## 10. Pa risgiau sydd yna ac a oes unrhyw beth y gallwn ei wneud i'w lleihau?

- **Ariannol** - Mae'r risg yn isel; Mae'n cael ei fonitro ac adroddir arno gan swyddogion cyllid CSDd.
- **Enw da** - Mae ffurfio'r Bartneriaeth AHNE a'r Cyd-bwyllgor yn ffurfioli'r trefniadau llywodraethu AHNE, ac yn dangos y gall awdurdodau lleol weithio mewn ffordd strwythuredig a chydweithredol.

## 11. Pŵer i wneud y Penderfyniad

11.1 Mae sail gyfreithiol i sefydlu Cyd-bwyllgor yn rhan o Adran 101 (5) Deddf Llywodraeth Leol 1972 a Deddf Llywodraeth Leol 2000, lle y gallai'r Awdurdodau Lleol ddechrau trefniadau i 'Ddirprwyo swyddogaethau ar y cyd gydag un neu fwy o awdurdodau lleol eraill ar ffurf Cyd-bwyllgor'.

11.2 Nodir pwerau archwilio o ran y partneriaethau megis yr AHNE yn Erthygl 6.1 a 6.3.4(d).

### **Swyddog Cyswllt:**

Swyddog AHNE

Ffôn: 01352 810614

Mae tudalen hwn yn fwriadol wag





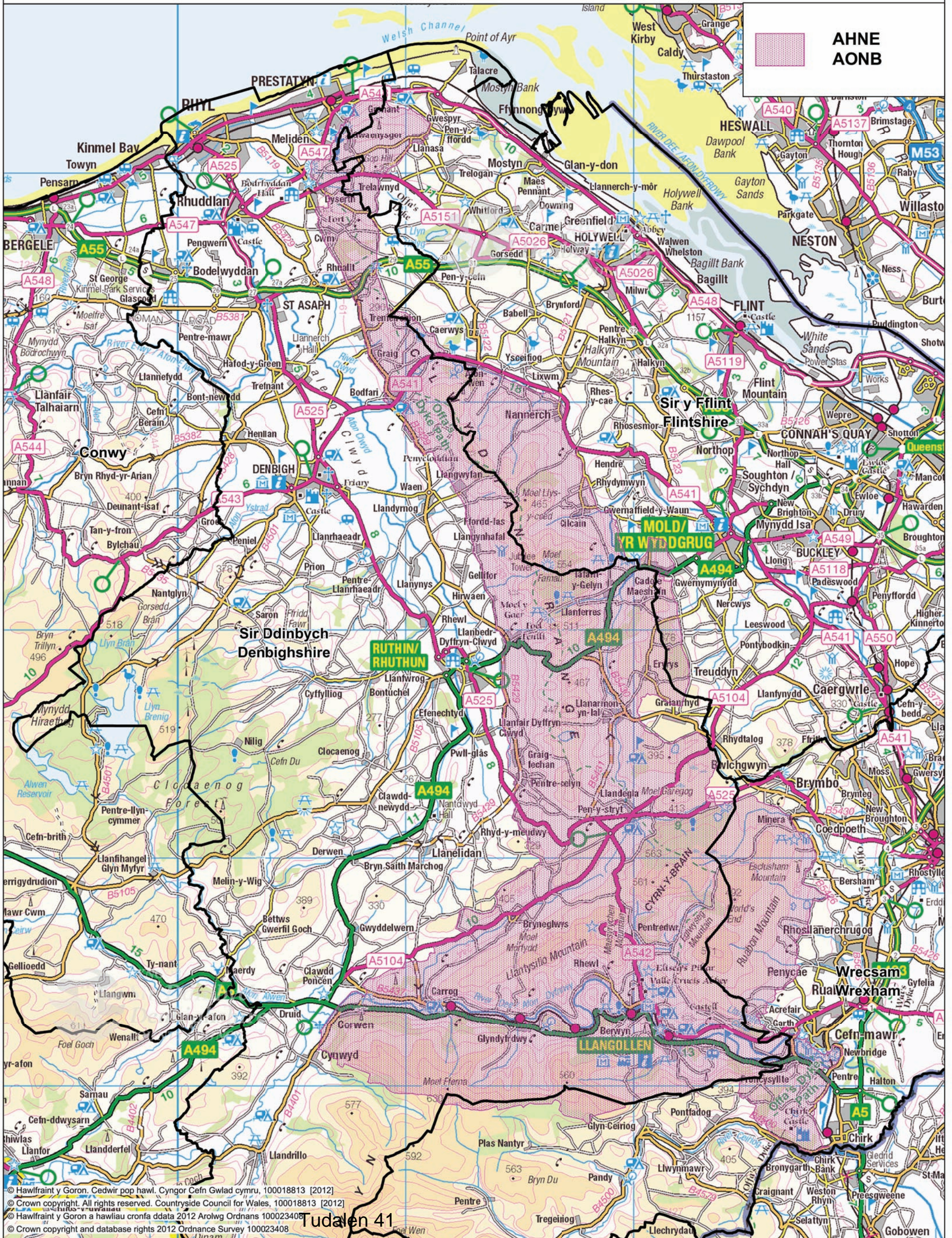
Graddfa/Scale: 1: 150000  
Dyddiad/Date: 27/03/2012

# Bryniau Clwyd a Dyffryn Dyfrdwy AHNE Clwydian Range and Dee Valley AONB



Bryniau Clwyd a  
Dyffryn Dyfrdwy  
Clwydian Range  
and Dee Valley

National Heritage  
Area of Outstanding Natural Beauty



© Hawffraint y Goron, Cedwir pop hawl, Cyngor Cefn Gwlad cymru, 100018813 [2012]  
© Crown copyright. All rights reserved. Countryside Council for Wales, 100018813 [2012]  
© Hawffraint y Goron a hawliau cronfa ddata 2012 Arolwg Ordnans 100023408  
© Crown copyright and database rights 2012 Ordnance Survey 100023408



Mae tudalen hwn yn fwriadol wag



**Bryniau Clwyd a  
Dyffryn Dyfrdwy**  
Clwydian Range  
and Dee Valley

**Appendix 2**

Ardal o Harddwch Naturiol Eithriadol  
Area of Outstanding Natural Beauty

<b>Forward Work Programme February 2015 Update</b>			
<b>Project</b>	<b>Detail/Action Management Plan Reference</b>	<b>Timescale</b>	<b>Cost –ve or +ve or neutral (Through existing and external budgets)</b>
<b>Finance</b>			
Finance and Funding	To be a standing item on the Forward Work programme	Report to each JC	Neutral
<b>Strategic Plans 2014-16</b>			
Communications Strategy	To asses monitoring and effectiveness of AONB Communication	Spring 2015	Neutral
Friends of the Clwydian Range and Dee Valley	Launch of an independent 'Friends Group'	Summer 2015	Neutral
AONB Management Plan	To support the Policies of the AONB through contribution to consultations. To implement the AONB Action Plan	Summer 2015	Neutral
Outreach and Volunteers strategy	To provide a policy statement, engagement plan and action plan	Summer 2015	Neutral
Business Plan	To write a five year business plan	Autumn 2015	Neutral
<b>Projects 2015-16</b>			
Clwydian Range 30 <sup>th</sup> Anniversary	Celebration of Anniversary		Neutral
AONB Tourism Strategy	To Implement the action plan	Autumn 2015	Neutral
Climate Change Programme	To implement and promote the new literature	Summer 2015	Neutral
Edernion Tourism Strategy	To implement the action plan	Autumn 2015	Neutral
<b>AONB Icons</b>			
World Heritage Site	Collaboration between the two designations	Autumn 2014	Neutral
<b>Section 85 Organisations</b>			
Planning	To produce an SPG for the AONB	Spring 2016	-ve
Tranquillity	To investigate improvements to Dark skies	Spring 2016	-ve
Urbanisation	To enter into an agreement with NEWTRA and LA Highways to respect the AONB's rural nature	Spring 2016	-ve
Tourism	Investigate how best to integrate the NE Wales and AONB Brands	Spring 2016	Visit Wales E4G

Mae tudalen hwn yn fwriadol wag

## **Green Links – End of Project Report**

### **Background**

Green Links was a 12 month £170,000 joint Conwy County Borough Council and Denbighshire County Council initiative, largely funded by RWE Innogy UK as part of its Gwynt y Môr tourism fund. The project covers the coastal area between Llandudno and Prestatyn.

The principal aims of the project are promotion of the walking and cycling routes and the green spaces within the project area to bring about:

- Economic regeneration through tourism
- Improved links to the Area of Outstanding Natural Beauty (AONB)
- Improved access to Local Nature Reserves (LNR)
- Improved quality of life and health for local communities



The project was delivered by a dedicated project officer managed within the Countryside Services of Conwy and Denbighshire, and with support from their Tourism units. The project officer started in November 2013 and has now successfully delivered all project elements.

### **Project Deliverables**

The project was mainly based around information sharing to both visitors and local residents. Small scale infrastructure work was completed to improve access and promote usage of the Green Spaces and walking and cycling infrastructure. The following is a summary of the key deliverables including who is now responsible for each product:

#### **Web-based information**

Web-based information forms the primary avenue for engaging with visitors before they arrive in the Green Links area. [www.greenlinks.org.uk](http://www.greenlinks.org.uk) provides nature reserve information, itinerary planning, accommodation searches and booking along with interactive travel planning. The website also includes bespoke promotional media including videos and



pictures of the nature reserves; for some reserves this is the only online record. The site also contains event information including countryside service specific events as well as general events to improve visitor experience.

[Greenlinks.org.uk](http://Greenlinks.org.uk) forms part of the wider Destination Conwy suite of websites. This ensures sustainability of the web

content which will be kept updated by Conwy TICs and Denbighshire Countryside Service. The website was designed and marketed by Newmind Ltd with content and layout delivered by the Green Links Project Officer.

#### **Touch Screen Information Points**

Four touch screen information points were developed to provide information to visitors and tourists once they were in the Green Links area. Touch screens are available from the Rest

and Be Thankful Cafe on the Great Orme, Porth Eirias in Colwyn Bay, Public Square in Rhyl Harbour and Prestatyn. The touch screens provide information on available walking, cycling and green space opportunities in the local vicinity. The network of touch screens also encourage visitors to travel further within the Green Links area.

The touch screens applications were a bespoke development by the Web Publishing Portal with content provided by the Green Links project officer. The application was developed in such a way to allow additional touch screen locations to be easily incorporated into the network. The touch screens are in a branded kiosk and supported by specific Green Links leaflets.



### **Leaflets**

Green Links has created a series of leaflets highlighting the promoted nature reserves, walking and cycling routes. Green Links developed 7 leaflets in partnership with Illustrative Mapping. 6 of the leaflets cover key towns and areas in a smaller scale with the final leaflet covering the whole Green Links area. Leaflets are available from relevant tourist information centres, some accommodation providers and public buildings.

Links to the AONB include Coed Bell, Bishops Wood, Prestatyn Hillside and the Prestatyn Dyserth way

### **Infrastructure Projects**

The Green Links area is already well furnished with infrastructure including the North Wales Path, Wales Coast Path and North Wales Coastal Cycle Route. Green Links carried out small scale infrastructure improvements including path works to some local nature reserves, adding additional cycle parking facilities and signing part of NCN 84 from Rhyl to Rhuddlan.

### **Monitoring**

Green Links has installed 1 dual pedestrian and cycle counter at the west end of Pensarn promenade and a pedestrian counter on the Marine Drive Llandudno. These are both managed by Conwy County Borough Council and will assist with traffic management; they will also complement existing counters within Denbighshire. A qualitative route user survey was also carried out in March 2014 to determine the attitudes of users of the Green Links route. This helped to influence the development of various Green Links products previously described here.





## North Wales Cycling Centre of Excellence

The aim of the North Wales Cycling Centre of Excellence was to create an area nationally renowned as an outstanding, all year round destination for cycling and outdoor activities. The three year partnership project with Dŵr Cymru and Conwy County Borough Council came to an end in June 2014.

The project delivered the following outcomes, 1 jobs created, 270 km of promoted routes, 60,671 visits, one new development and 13 businesses assisted.

As part of the project a three day loop was established, the Triban Trail which has led to improvements to some Rights of Way in the area and also the creation of new routes. A significant outcome of the work is a new bridleway on the western side of the Clwydian Range, which adds value to the current trails in the Country Park and means that people do not need to do a return



route along the road.

Another area which provided a significant improvement was the resurfacing of the path along the railway line at Corwen as a multi user route, making the section accessible for wheelchair users and cyclists. Gateway signage has been installed at the start of each day's trail section.



In 2014 the projects achievements was celebrated with the visit of the Commonwealth Games' Queen's Baton. A relay of volunteers that have made a significant contribution to conserve the countryside or help people enjoy the countryside carried the baton to the summit of Moel Famau.



Promotional material has also been created by the project, which includes the development of a website and a mobile phone ap. The website and ap are both soon to be extended to include outstanding road cycling routes in addition to mountain biking routes. The portable track continues to be popular and was taken to venues across the UK in partnership with One Planet as part of the Mountain Biking Marathon Series, to promote the areas mountain biking offer.



Through the North Wales Cycling Centre of Excellence Scheme, Dwr Cymru built an extension to the visitor centre at Llyn Brenig, including the introduction of bike hire and bike wash facilities. Visitor figures to Llyn Brenig are up by 43% following the completion of the new visitor centre.



A new cycle track across was also established by the scheme on the northern side of the lake, which means that cyclists no longer need to negotiate the fast B road, creating a family friendly ride.

The new mountain bike track at Marsh Track has now been complete. The project was a great success with the development of a 2km trail, built on an old tip site. The project utilised material excavated from the Rhyl Cut, resulting in a saving of £437, 624.





The Joint Committee for the Clwydian  
Range and Dee Valley Area of  
Outstanding Natural Beauty (AONB)  
2014-15 Progress Report  
14<sup>th</sup> May 2015

Equality Impact Assessment

## Proposed creation of Joint Committee

Contact: Howard Sutcliffe AONB Officer

Updated: 23<sup>rd</sup> April 2015

**1. What type of proposal is being assessed?**

Other

**2. Please describe the purpose of this proposal**

Reporting the progress in 2014-15 of AONB Governance and Projects

**3. Does this proposal require a full equality impact assessment?**  
*(Please refer to section 1 in the toolkit above for guidance)*

No

**4. Please provide a summary of the steps taken, and the information used, to carry out this assessment, including any engagement undertaken**  
*(Please refer to section 1 in the toolkit for guidance)*

The Governance meetings will be accessible to all. Projects where possible improve accessibility to all, sometimes upland terrain prevents this.

**5. Will this proposal have a positive impact on any of the protected characteristics?**  
*(Please refer to section 1 in the toolkit for a description of the protected characteristics)*

No, the proposal is neutral

**6. Will this proposal have a disproportionate negative impact on any of the protected characteristics?**

No

**7. Has the proposal been amended to eliminate or reduce any potential negative impact?**

No	This has not been necessary, as no potential negative impact has been identified.
----	---

**8. Have you identified any further actions to address and / or monitor any potential negative impact(s)?**

Yes	As discussed earlier, no potential negative impact has been identified. However, the actual impact of the proposal will be reviewed after implementation to see if any lessons can be learned.
-----	--

Action(s)	Owner	Date
none		

**9. Declaration**

Every reasonable effort has been made to eliminate or reduce any potential disproportionate impact on people sharing protected characteristics. The actual impact of the proposal will be reviewed at the appropriate stage.

Review Date:	23/4/15
--------------	---------

Name of Lead Officer for Equality Impact Assessment	Date
Howard Sutcliffe	23/4/15

**Please note you will be required to publish the outcome of the equality impact assessment if you identify a substantial likely impact.**

\_\_\_\_\_

Mae tudalen hwn yn fwriadol wag

<b>Adroddiad i'r:</b>	<b>Pwyllgor Archwilio Partneriaethau</b>
<b>Dyddiad y Cyfarfod:</b>	<b>14 Mai 2015</b>
<b>Aelod / Swyddog Arweiniol:</b>	<b>Aelod Arweiniol Hamdden, Ieuenctid, Twristiaeth a Datblygu Gwledig/Pennaeth Gwasanaethau Priffyrdd ac Amgylcheddol</b>
<b>Awdur yr Adroddiad:</b>	<b>Rheolwr Gwasanaethau Cefn Gwlad a Threftadaeth Sir Ddinbych</b>
<b>Teitl:</b>	<b>Adolygiad o Dirweddau Dynodedig yng Nghymru Cam 2 Cais am Dystiolaeth</b>

---

## **1. Am beth mae'r adroddiad yn sôn?**

Ar 25 Medi 2014, cyhoeddodd y Gweinidog Cyfoeth Naturiol adolygiad annibynnol ar ddiben a llywodraethu tirweddau dynodedig yng Nghymru, y tri Pharc Cenedlaethol a'r pum Ardal o Harddwch Naturiol Eithriadol (AHNE).

Mae un o'r 5 AHNE, Ardal o Harddwch Naturiol Eithriadol Bryniau Clwyd a Dyffryn Dyfrdwy yn rhychwantu ffiniau sirol Sir Ddinbych, Sir y Fflint a Wrecsam.

Mae'r adroddiad hwn yn grynodedig byr o Gam 1 o'r Adolygiad o Dirweddau Dynodedig yng Nghymru ac mae'n egluro pa dystiolaeth sydd ei hangen ar gyfer Cam 2. Mae'r ddwy eitem o wybodaeth yn Atodiad 1.

Mae'r adroddiad yn cyflwyno ymateb drafft (Atodiad 2) i Gam 2 gan Gyngor Sir Ddinbych ar gyfer aelodau'r Pwyllgor i'w drafod a'i fireinio.

Os gall y Pwyllgor ddod i gytundeb bydd yr ymateb terfynol wedyn yn cael ei gyflwyno i'r Bwrdd Adolygu ar ôl awdurdodiad gan Aelod Arweiniol/Cabinet.

## **2. Beth yw'r rheswm dros lunio'r adroddiad hwn?**

I geisio barn yr Aelodau ar ymateb drafft CSDd (Atodiad 2) i'r cwestiynau a godwyd yng Ngham 2 yr Adolygiad o Ardaloedd Dynodedig yng Nghymru. Yna, mae angen penderfyniad ar p'un ai i gytuno os gall yr ymateb drafft wedi'i fireinio gael ei drosglwyddo i'r Cabinet ar gyfer cymeradwyaeth fel ymateb swyddogol Cyngor Sir Ddinbych i'r Adolygiad.

## **3. Beth yw'r Argymhellion?**

I drafod ac argymhell cymeradwyo ymateb swyddogol Cyngor Sir Ddinbych i adolygiad o Dirweddau Dynodedig yng Nghymru Cam 2 cais am dystiolaeth.

#### 4. Manylion yr Adroddiad

Ym mis Medi 2014, cyhoeddodd y Gweinidog Cyfoeth Naturiol adolygiad annibynnol ar ddiben a llywodraethu tirweddau dynodedig yng Nghymru. Mae'r adolygiad dau gam hwn wedi archwilio'r dynodiadau eu hunain i ddechrau, yn edrych ar eu dibenion a rhinweddau dosbarthu tirweddau dynodedig Cymru dan un math o ddynodiad.

Amlinellir argymhellion cam 1 yn Atodiad 1 o dan yr adran a labelir Atodiad 1. Mae'r prif argymhellion yn cynnwys;

- Ni ddylai fod unrhyw ddynodiad sengl;
- Ceir un set o ddibenion statudol a dyletswydd statudol sengl cysylltiedig ar gyfer y ddau ddynodiad.
- Newid yr enw "Ardaloedd o Harddwch Naturiol Eithriadol" (AHNE) i "Dirweddau Cenedlaethol Cymru"
- Dylai fod tri diben statudol cysylltiedig ar gyfer y Parciau Cenedlaethol a'r Tirweddau Cenedlaethol.  
Sef:  
"Gwarchod a gwella tirwedd unigryw a rhinweddau morlun yr ardal," (*Diben Cadwraeth*)  
"Hybu lles corfforol a meddyliol drwy fwynhad a dealltwriaeth o dirlun yr ardal," (*Diben Lles Dynol*)  
"Hyrwyddo mathau cynaliadwy o reoli adnoddau naturiol ac economaidd a datblygu cymunedol sy'n cefnogi treftadaeth ddiwylliannol yr ardal." (*Pwrpas Rheoli Adnoddau Cynaliadwy*)
- Un ddyletswydd statudol newydd sy'n cael gwared ar y rhagddodiaid "rhoi sylw i" gwan yn y dyletswyddau presennol ar gyrff cyhoeddus perthnasol, a'u disodli gydag un ddyletswydd glir: "I gyfrannu at gyflawni tri Diben y Tirweddau Dynodedig Cenedlaethol."

Bydd adroddiad Cam 1 nawr yn darparu sail ar gyfer symud ymlaen i Gam 2 yr adolygiad fel y nodir yn y cylch gorchwyl gwreiddiol. Mae hyn yn cynnwys:

- Adolygu trefniadau llywodraethu a rheoli tirweddau dynodedig;
- Adolygu ac archwilio sut fyddai unrhyw gorff/gyrff llywodraethu yn hyrwyddo cydweithredu a chydweithio ac osgoi dyblygu orau; ac
- Adolygu ac archwilio'r ffordd orau i unrhyw gorff llywodraethu atgyfnerthu atebolrwydd lleol a gwneud penderfyniadau yn y dyfodol.

Mae gan y ddau ddynodiad (Parciau Cenedlaethol ac AHNE) drefniadau llywodraethu gwahanol ar hyn o bryd.

Arweiniodd Deddf yr Amgylchedd 1995 at greu Awdurdodau Parc Cenedlaethol annibynnol ar gyfer pob un o'r Parciau Cenedlaethol yng Nghymru. Mae pob Parc yn cael ei lywodraethu gan fwrdd sy'n cynnwys dwy ran o dair o gynghorwyr lleol a benodir gan awdurdodau lleol cyfansoddol, ac un rhan o dair a benodir gan Weinidogion Cymru. Mae eu gwariant refeniw cymeradwy yn cael ei osod bob blwyddyn gan Weinidogion Cymru, ac mae'r awdurdodau yn codi ar eu hawdurdodau cyfansoddol ar gyfer gweddill eu cyllideb weithredol. Awdurdodau'r Parciau Cenedlaethol yw'r awdurdodau cynllunio ar gyfer eu hardaloedd.

Mae'r rhan fwyaf o'r Ardaloedd o Harddwch Naturiol Eithriadol yng Nghymru yn cael eu goruchwyllo gan Gyd-bwyllgor Ymgynghorol, gydag unrhyw wasanaethau wedi'u gwreiddio o fewn awdurdodau lleol cyfansoddol. Fodd bynnag, nid oes dim cyllid canolog. Mae'r CBY yn ymgynghorai statudol ar geisiadau cynllunio ar gyfer yr ardal.

Yn ddiweddar mae AHNE Bryniau Clwyd a Dyffryn Dyfrdwy wedi symud i ffwrdd oddi wrth y model hwn. Mae Cyd-bwyllgor wedi'i ffurfio, yn cynnwys 2 aelod cabinet/gweithredol o bob un o'r Awdurdodau Lleol. Islaw hyn bydd Partneriaeth yn cael ei ffurfio, yn cynnwys nifer o fudd-ddeiliaid sydd â diddordeb yn yr AHNE. Ystyrir hyn yn fodel cryfach ar gyfer hyrwyddo cydweithredu, gwneud penderfyniadau gwell a gwella atebolrwydd lleol.

Mae'r Adolygiad wedi bod yn benodol iawn yn ei ofynion a lluniwyd cyfres o gwestiynau i helpu i gasglu tystiolaeth. Mae Cam 2 yn gofyn y canlynol;

**1. Beth yw'r trefniadau llywodraethu mwyaf effeithiol ar gyfer tirweddau dynodedig sy'n eu galluogi i arwain a bodloni canlyniadau uchelgeisiol o fewn ac ar gyfer Cymru?**

Er mwyn ateb y cwestiwn hwn efallai y byddwch am ystyried ac ymateb i'r cwestiynau ychwanegol, cysylltiedig hyn:

**2. Yng ngoleuni adroddiad ac argymhellion Cam Un yr Adolygiad a datganiad ysgrifenedig y Gweinidog Cyfoeth Naturiol (dyddiedig 4 Mawrth) beth yw eich gweledigaeth ac uchelgais ar gyfer cyfeiriad tirweddau dynodedig Cymru yn y tymor canolig i'r tymor hir?**

**3. O safbwynt llywodraethu, pa ffactorau sy'n atal a/neu yn debygol o atal tirweddau dynodedig o wireddu gweledigaeth ac uchelgais a nodwyd gennych mewn ymateb i gwestiwn 2?**

**4. O safbwynt llywodraethu, pa ffactorau fydd yn caniatáu i dirweddau dynodedig wireddu gweledigaeth ac uchelgais a nodwyd gennych mewn ymateb i gwestiwn 2?**

**5. A oes tirwedd ddynodedig/modelau llywodraethu ardal warchoddedig /dulliau rydych am dynnu sylw at yr Adolygiad?**

Mae ymateb drafft i'r cwestiynau hyn wedi'u paratoi i'r Pwyllgor eu trafod a nodir yn Atodiad 2.

**5. Sut mae'r penderfyniad yn cyfrannu at y Blaenoriaethau Corfforaethol?**

Mae gan yr AHNE hanes profedig o wella cymunedau lleol a gwella'r economi leol. Bydd gwella llywodraethu'r AHNE yn cyfrannu at redeg y Cyngor yn effeithlon a gwella gwasanaethau i'n cwsmeriaid.

**6. Faint fydd hyn yn ei gostio a sut y bydd yn effeithio ar wasanaethau eraill?**

Ni fydd ymateb i'r adolygiad yn arwain at unrhyw gostau nac yn effeithio ar wasanaethau eraill.

**7. Beth yw prif gasgliadau'r Aseiad o Effaith ar Gydraddoldeb (AEC) a gynhaliwyd ar y penderfyniad? Dylai'r templed AEC wedi'i lenwi gael ei atodi fel atodiad i'r adroddiad.**

Gweler Atodiad 3 ynghlwm.

**8. Pa ymgynghori a wnaed â'r Pwyllgorau Archwilio ac eraill?**

Dyma'r adroddiad cyntaf am yr adolygiad hwn i fynd i Bwyllgor Cyngor Sir Ddinbych. Bydd yr adolygiad hefyd yn cael ei ystyried gan Gyd-bwyllgor AHNE Bryniau Clwyd a Dyffryn Dyfrdwy yn ddiweddarach yn y mis.

**9. Datganiad y Prif Swyddog Cyllid**

Mewn ymateb i'r adolygiad hwn nid oes unrhyw effaith ar gyllidebau neu oblygiadau o natur ariannol.

**10. Pa risgiau sydd yna ac a oes unrhyw beth y gallwn ei wneud i'w lleihau?**

Amh.

**11. Pŵer i wneud y Penderfyniad**

Mae Adran 21 o Ddeddf Llywodraeth Leol 2000, ac Erthyglau 6.3.2(c) (d) a 6.3.4(ch) yn nodi pwerau archwilio ar y mater hwn.

**Swyddog Cyswllt:**

Rheolwr Gwasanaethau Treftadaeth a Chefn Gwlad  
Ffôn: 01352 811029



## The Review of Designated Landscapes in Wales

Third Floor, South Core, CO4  
Welsh Government,  
Cathays Park  
Cardiff,  
CF10 3NQ

24 March 2015

I am writing on behalf of the Review of Designated Landscapes in Wales – who are carrying out an independent review concerning Wales’ National Parks and Areas of Outstanding Beauty (AONBs) commissioned by the Minister for Natural Resources.

As you may be aware the Minister, as well as the wider Welsh Government Cabinet, has considered our Stage One report concerning the purposes and duties of designated landscapes, and whether there should be one designation covering both National Parks and AONBs. The report was received positively and the Minister has asked the Review to continue onto Stage Two of our work examining the governance arrangements of the two designations.

We have resolved, again, to involve stakeholders in gathering evidence over the forthcoming months; and we look forward to full and frank discussions around designated landscape governance. We want evidence to better understand what works; where change is required, and what are the optimum governance arrangements to achieve the Minister’s challenge that:

*“...designated landscapes become international exemplars of sustainability... living landscapes with vibrant, resilient communities, with extensive outdoor recreation opportunities, thriving eco-systems and rich bio-diversity. With the right leadership they have the potential to be areas where innovative solutions to the challenges of sustainability in fragile rural areas are tried and tested, understood and publicised.*

*As we move forward in Wales to develop our own ways of delivering public services associated with planning, regulating land use and managing our natural resources, it’s vital that the National Parks and AONBs are not left behind.”*

We will consider the medium to long term vision and ambitions of our designated landscapes in the light of our earlier, Stage One report and recommendations, before considering the most effective delivery mechanisms for achieving that vision, ambition and direction of travel. This raises an important and timely “*grand challenge*” for the designated landscapes which encompasses this question: *what are the most effective governance arrangements for designated landscapes that allow them to lead on and meet ambitious outcomes within and for Wales?* The Panel will also consider comparisons with other governance models, both inside and outside the UK, to feed into this work.

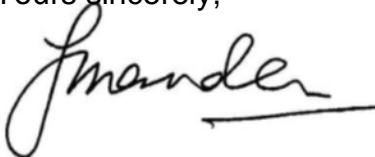
It has been made very clear to us that the Welsh Government as a whole regard designated landscapes as national assets which can deliver multiple benefits. They will be expected to assist the nation in achieving wider, ambitious social, economic as well and environmental priorities, while remaining distinctive, special landscapes. They will also be expected to become exemplars in facilitating cross portfolio working in such areas as health, education and tourism; tackling poverty and creating real progress around 'green growth'.

The Review Panel shall be pleased if you or your organisation will submit written evidence to them on designated landscape governance **up until 29<sup>th</sup> May 2015**. This letter sets out the preamble to Stage Two, while the questions on which we welcome your views and evidence can be found on the following page. **We also intend to conduct evidence gathering sessions with stakeholders in mid-late May.** **Please note that the Review Secretariat may approach you/your organisation in due course.**

Following the above deadline the evidence will be analysed, before informing the final report which is due to be delivered to the Minister for Natural Resources in late July 2015.

Stage Two presents us with an opportunity to create a realistic vision and governance framework for Wales' designated landscapes that could enable them to deliver for current and future generations. We look forward to your continued engagement, evidence and contributions.

Yours sincerely,



**Professor Terry Marsden**  
Chair  
The Review of Designated Landscapes in Wales

**Please submit evidence and comments by 29<sup>th</sup> May 2015:**

**By post:**

The Review of Designated Landscapes in Wales  
Third Floor, South Core, C04  
Welsh Government, Cathays Park  
Cardiff CF10 3NQ

**By email:**

designatedlandscapesreview@wales.gsi.gov.uk

The Stage One report can be accessed online via [www.tinyurl.com/DLRWales](http://www.tinyurl.com/DLRWales)

# The Review of Designated Landscapes in Wales

## Stage Two

### Background

Welsh Ministers want to ensure that Wales' designated landscapes are equipped to meet current and future challenges, and they become internationally recognised exemplars for sustainability.

They commissioned this review in September 2014 to consider whether the current arrangements will deliver these objectives and, if not, what changes should be made in order to achieve them. The Review will engage with the public and designated landscape stakeholders in order to collate, examine and assess evidence concerning the designation, purposes, aims and governance of designated landscapes in Wales.

In the medium to long term, the new arrangements must enable any future body/bodies that govern our designated landscapes to further develop and enhance their strategic, policy making and operational delivery abilities such that they will:

- i. Deliver on designated landscape purposes.
- ii. Ensure the special qualities of designated landscape are protected.
- iii. Maximise the potential of these areas.
- iv. Support Natural Resource Management.
- v. Be exemplars particularly in landscape management and sustainability.
- vi. Develop clear and consistent ways of collaborating
- vii. Secure national leadership and yield the most effective use of resources.
- viii. Avoid duplication and maximise the use of scarce expertise.
- ix. Reinforce local accountability and decision making.

In January 2015 the Review of Designated Landscapes in Wales reported on Stage One which examined the purposes and duties of designated landscapes, and whether there should be one designation covering both National Parks and AONBs.

### Remit and Terms of Reference

The Minister for Natural Resources has since provided an update concerning the Review and has written to the Chairman of the Review, Prof. Terry Marsden (for ease of reference, enclosed) to set out the remit and terms of reference for Stage Two.

Within this stage the Review has been asked to consider:

- The governance and managements arrangements of our designated landscapes;
- How any future governing body/bodies would best promote collaboration and joint working while avoiding duplication;
- How any future governing body would best reinforce local accountability and decision making

The Review has also been asked to consider the future role of National Park Authorities as planning authorities; how the boards of these national assets can better reflect Welsh society in terms of gender, disability and ethnicity and specific issues of National Park Authority governance raised by the Review of Public Service and Delivery last year.

The following questions have been developed to help the Review identify and collate the evidence required to be able to reach its Stage Two conclusions. The first question, is referred to as the “Grand Challenge” by Professor Marsden in his covering letter/preamble, the additional questions have been constructed to assist the Panel and others in reaching their conclusions.

### Questions for Stage Two

1	<p><b>What are the most effective governance arrangements for designated landscapes that allow them to lead on and meet ambitious outcomes within and for Wales?</b></p> <p>In order to answer this question you may want to consider and respond to these additional, related questions:</p>
2	<p><b>In light of the Review’s Stage One report and recommendations and the Minister for Natural Resources’ written statement (dated the 4<sup>th</sup> March) what is your vision and ambition for the direction of Wales’s designated landscapes in the medium to long term?</b></p>
3	<p><b>From a governance perspective, what factors are preventing and/or likely to prevent designated landscapes from achieving the vision and ambition you set out in response to question 2?</b></p>
4	<p><b>From a governance perspective, what factors will allow designated landscapes to achieve the vision and ambition you set out in response to question 2?</b></p>
5	<p><b>Are there other designated landscape/protected area governance models/approaches you wish to bring to the attention of the Review?</b></p>



---

## **WRITTEN STATEMENT BY THE WELSH GOVERNMENT**

---

**TITLE**      **Update on the Review of Designated Landscapes in Wales**

**DATE**      **4 March 2015**

**BY**         **Carl Sargeant Minister for Natural Resources**

On 25 September 2014 I announced an independent review into the purpose and governance of the designated landscapes in Wales, the three National Parks and five Areas of Outstanding Natural Beauty. This two stage review would firstly examine the designations themselves looking at their purposes and the merits of classifying Wales' designated landscapes under one type of designation, before then considering the associated governance arrangements.

When I launched this Review I set out my own commitment to the National Parks and Areas of Outstanding Natural Beauty. These areas are highly valued. They are integral to Wales' national identity and are recognised internationally as part of a global family of protected areas. I am proud that a quarter of Wales is recognised in this way. They are assets that we should celebrate and protect, but also continue to harness to tackle the environmental and economic challenges that we face. They have a valuable contribution to make to the green growth and natural resource management agenda.

I want to see our designated landscapes become international exemplars of sustainability. They should be living landscapes with vibrant, resilient communities, with extensive outdoor recreation opportunities, thriving ecosystems and rich biodiversity. With the right leadership they have the potential to be areas where new innovative solutions to the challenges of sustainability in fragile rural areas are tried and tested, understood and publicised.

The purpose of the Review is to gather and analyse evidence in support of a comprehensive set of recommendations which should ensure that our designated landscapes are best equipped to realise their ambition, while building upon their internationally recognised status and brand.

As we move forward in Wales to develop our own ways of delivering public services associated with planning, regulating land use and managing our natural resources, it's vital that the National Parks and AONBs are not left behind. Reform will be

necessary to ensure that these areas prosper through their continued protection while maximizing the benefits they provide to the people of Wales.

So far the Review has considered whether the purpose and identity of the designated landscapes should be changed. Between late September and late November 2014 the Panel involved a wide range of designated landscape interests including constituent local authorities, community councils and the WLGA; the farming unions; the Federation of Small Businesses and Wales Tourism Alliance; The Welsh Language Commissioner; Natural Resources Wales and RTPI Cymru. Eight workshops (geographically within or near each designated area) were held with members of the public. Finally, meetings were held with officials from the Welsh Government and the Sustainable Futures Commissioner, Peter Davies.

The Panel has made six recommendations which are a modest package of amendments to the designations, see Annex 1. I expect that as the Panel expands its evidence base it will need to reflect on and amend these initial recommendations. The report of Stage one will now provide the basis for proceeding to Stage two of the review as set out in the original terms of reference. This includes:

- i. Review the governance and management arrangements of the designated landscapes;
- ii. Review and examine how any governing body/bodies would best promote collaboration and joint working while avoiding duplication; and
- iii. Review and examine the best way for any future governing body to reinforce local accountability and decision making.

Both designations currently have different governance arrangements.

The Environment Act 1995 led to the creation of independent National Park Authorities for each of the National Parks in Wales. Each Park is governed by a board comprising two thirds local councillors appointed by constituent local authorities, and one third appointed by The Welsh Ministers. Their approved revenue expenditure is set each year by The Welsh Ministers, and the authorities levy their constituent authorities for the balance of their operational budget. National Park Authorities are the planning authorities for their areas. Areas of Outstanding Natural Beauty are overseen by a Joint Advisory Committee (JAC), with any services embedded within constituent local authorities. There is no central funding. The JAC is a statutory consultee on planning applications for the area.

I look forward to the second phase of the review, and to working with the Parks and AONBs to develop their ambition and to secure for them a future which builds on the special nature of these areas. I will respond to the Panel's recommendations when the review is completed.

The Panel's first stage report is available at <http://gov.wales/topics/environmentcountryside/consmanagement/countrysidecoastalaccess/landscapes/?lang=en>

The final report will be available in July.

## **Annex 1: Recommendations from the first report of the Review of Designated Landscapes in Wales**

### **Recommendation 1**

We recommend that there should not be a single designation.

### **Recommendation 2**

We recommend that there is ONE set of statutory Purposes and an associated single statutory Duty for both designations.

### **Recommendation 3**

We recommend changing the name of “Areas of Outstanding Natural Beauty” (AONBs) to “National Landscapes of Wales”

### **Recommendation 4**

We recommend the establishment of a consistent and resilient nomenclature as well as structure, including:

“The National Designated Landscapes of Wales”

“National Parks” and “National Landscapes” which are “The Equivalent Designations”

The Equivalent Designations would possess Identical Statutory Purposes & Duties

### **Recommendation 5**

We recommend there should be THREE interlocking statutory purposes for both the National Parks *and* National Landscapes.

These are:

“To conserve and enhance the distinctive landscape and seascape qualities of the area,”

*(the Conservation Purpose)*

“To promote physical and mental well-being through the enjoyment and understanding of the landscape of the area,”

*(the Human Well-being Purpose)*

“To promote sustainable forms of natural resource management and economic and community development which support the cultural heritage of the area.”

*(the Sustainable Resource Management Purpose)*

### **Recommendation 6**

We recommend a new single Statutory Duty that removes the weak “have regard to” prefixes in the current duties on relevant public bodies, and replaces them with a single and clear duty:

“To contribute to the delivery of the three Purposes of the National Designated Landscapes.”

Carl Sargeant AC / AM  
Y Gweinidog Cyfoeth Naturiol  
Minister for Natural Resources



Llywodraeth Cymru  
Welsh Government

Prof. Terry Marsden,  
Chair of the "Review of Designated Landscapes in  
Wales"  
Sustainable Places Research Institute  
33 Park Place,  
Cardiff,  
CF10 3BA

*3rd* March 2015

Dear Terry,

I would like to thank you, John and Ruth for your work to date on the Review of Designated Landscapes in Wales, and for the recommendations you have presented from the first stage. The report is a useful record of the progress made and provides the basis for proceeding to the next stage.

As you continue your work on the review can I take this opportunity to remind you that its purpose is to gather and analyse evidence in support of a comprehensive set of recommendations which should ensure that our designated landscapes are best equipped to meet current and future challenges while building upon their internationally recognised status.

In announcing the review I set out my own commitment to seeing the National Parks and Areas of Outstanding Natural Beauty become international exemplars of sustainability: living landscapes with vibrant, resilient communities, providing extensive outdoor recreation opportunities, tackling social issues and, creating thriving ecosystems which are rich in biodiversity. I believe they have the potential to act as areas where new innovative solutions to the challenges of sustainability and natural resource management can be tried, tested, understood and publicised. Your review is an important step in helping realise this ambition.

The remit for your next stage is to consider:

- the governance and management arrangements of our designated landscapes;
- how any future governing body/bodies would best promote collaboration and joint working while avoiding duplication;
- how any future governing body would best reinforce local accountability and decision making.

I expect that as you expand on your evidence base you will need to reflect and amend your initial recommendations. Your final report due in July should provide a single set of

Bae Caerdydd • Cardiff Bay  
Caerdydd • Cardiff  
CF99 1NA

English Enquiry Line 0845 010 3300  
Llinell Ymholiadau Cymraeg 0845 010 4400  
Correspondence: Carl.Sargeant@wales.gsi.gov.uk

*Wedi'i argraffu ar bapur wedi'i ailgylchu (100%)*

*Printed on 100% recycled paper*



recommendations which encompass both stages of the review. This report will need to demonstrate clearly how the Panel has considered evidence from witnesses and literature, with clear analysis in support of its recommendations. It is important that any recommendations clearly articulate the issue they seek to address and evidence the difference in delivery that you would expect as a result of their implementation.

The role of National Park Authorities as Planning Authorities and whether this should continue has been raised and debated on many occasions. I believe that 25 local planning authorities are too many for a country and population the size of Wales. We need larger, more resilient bodies with a range of specialist skills so that they are better equipped to deliver for communities. They should have the potential to deliver an efficient and resilient planning service. In moving forward I am concerned that the National Parks are not left behind. Our designated landscapes demand and deserve the best possible service in terms of development and management and so your consideration of governance must encompass the future role of National Park Authorities as planning authorities.

In your consideration of representation and accountability you should have regard to board balance in terms of gender, disability and ethnicity.

I look forward to considering your report and recommendations later this year.

Yours sincerely

A handwritten signature in black ink, appearing to be 'C. Sargeant', written in a cursive style.

**Carl Sargeant AC / AM**  
Y Gweinidog Cyfoeth Naturiol  
Minister for Natural Resources

Mae tudalen hwn yn fwriadol wag

Eich cyf / Your ref

Ein cyf / Our ref

Dyddiad / Date

Rhif union / Direct dial

## Appendix 2

The Review of Designated  
Landscapes in Wales  
Third Floor, South Core, CO4,  
Welsh Government,  
Cathays Park,  
Cardiff  
**CF10 3NQ**

Dear Professor Terry Marsden,

### **The Review of Designated Landscapes in Wales Response to Stage Two, Denbighshire County Council**

The Clwydian Range and Dee Valley Area of Outstanding Natural Beauty (AONB) forms an imposing upland frontier in North East Wales, one of Britain's scenic highlights. This AONB covers 390 square kilometres of windswept hilltops, heather moorland, limestone crags and wooded valleys, almost touching the coast at Prestatyn in the north and stretches to dramatic Moel Fferna, the highest point in the AONB at 630 metres, in the south. The area embraces some of Wales's most glorious landscape, the iconic Moel Famau, the World Heritage Site of Pontcysyllte Aqueduct and Llangollen Canal and Castell Dinas Bran.

The Clwydian Range Area of Outstanding Natural Beauty (AONB), designated in 1985 celebrates its 30<sup>th</sup> Anniversary this year. In 2011 the Vale of Llangollen and the Dee Valley were also designated as an AONB. The two areas were joined, creating the Clwydian Range and Dee Valley AONB. It is the most recent landscape designation in Wales and the largest AONB in Wales.

The extent of the AONB crosses the Local Authorities of Denbighshire, Flintshire and Wrexham. The area contained within Denbighshire is the largest of the three Authorities at around 80%.

Denbighshire County Council (DCC) has been the lead authority since initial designation and has a dedicated AONB team within its Countryside Service. The Authority, with its other local authority partners, supports the principles and purposes of AONBs and proactively contributes to the delivery of the AONB Management Plan.

It recognises the AONB landscape supports a rich biological and cultural resource that delivers benefits for communities, local economies and ecosystems, often beyond its boundaries.

Denbighshire County Council welcomes the opportunity to contribute their comments to the Second Stage of the Review of Designated Landscapes in Wales.

Swyddfeydd Cyngor, Neuadd y Sir,  
Ffordd Wynnstay, Rhuthun,  
Sir Ddinbych LL15 1YN  
Ffôn: 01824 706078  
Ffacs: 01824 707446  
Symudol: 46  
e-bost: [name.name@sirddinbych.gov.uk](mailto:name.name@sirddinbych.gov.uk)  
Gwefan: [www.sirddinbych.gov.uk](http://www.sirddinbych.gov.uk)

Council Offices, County Hall,  
Wynnstay Road, Ruthin,  
Denbighshire LL15 1YN  
Phone: 01824 706078  
Fax: 01824 707446  
Mobile: 01824 707446  
e-mail: [name.name@sirddinbych.gov.uk](mailto:name.name@sirddinbych.gov.uk)  
Website: [www.denbighshire.gov.uk](http://www.denbighshire.gov.uk)

**Question 1. What are the most effective governance arrangements for designated landscapes that allow them to lead on and meet ambitious outcomes within and for Wales?**

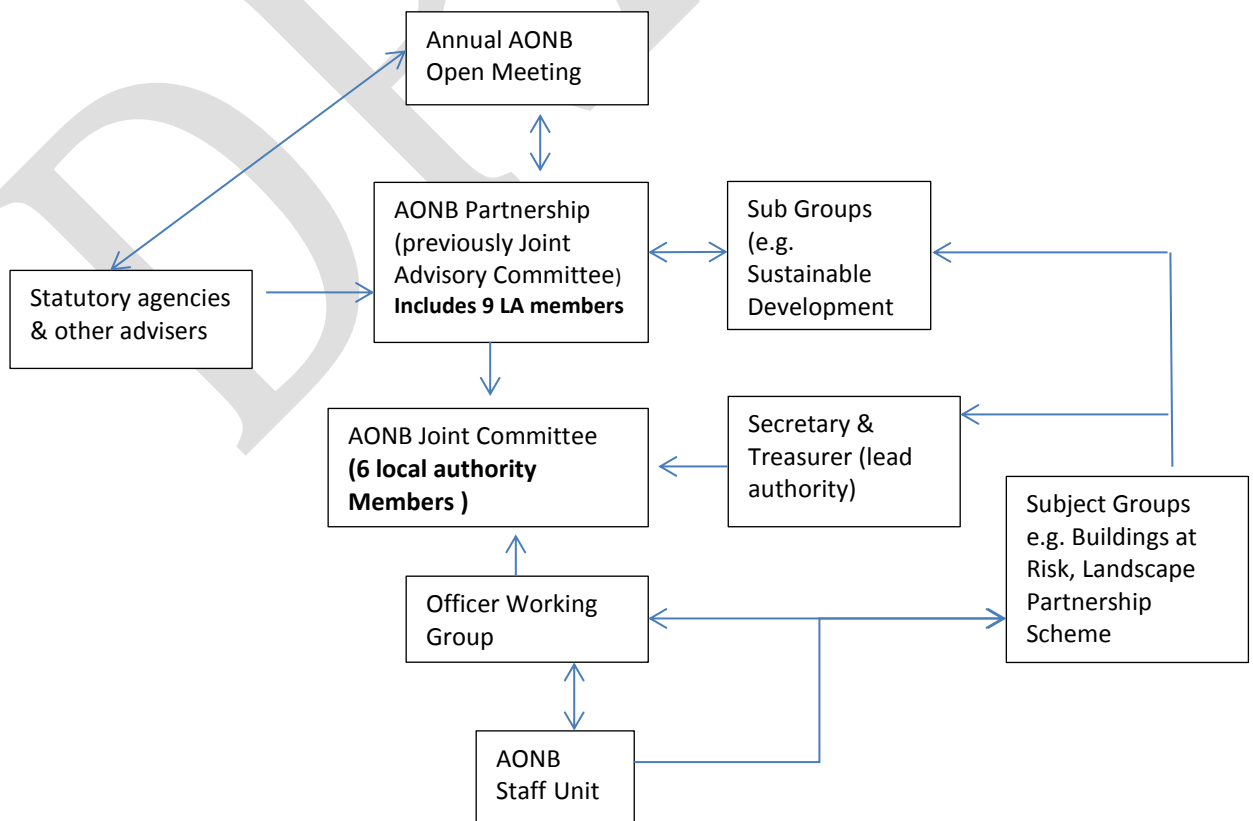
DCC believe that effective governance arrangements for AONBs need to enable:

- the delivery of its statutory purpose to conserve and enhance the natural beauty of the area
- All public bodies and statutory undertakers as defined in Section 85 of the Countryside and Rights of Way Act 2000 – to have a duty to have regard for the purposes of ANOBs
- Support of the AONB vision and enable the delivery of the AONB management plan
- The coordination of a State of the Environment Report for the AONB.
- AONB policies and projects contribute to the delivery of other National, Regional and local policies and plans.
- an open and accountable structure, a balanced representation of local interest and engagement with local communities

The extended Clwydian Range and Dee Valley AONB is in its infancy. Following its designation, an Interim Joint Advisory Committee was established to guide the work of officers during a transitional phase. During this period a revised governance procedure was established and agreed by Denbighshire and Flintshire County Councils and Wrexham County Borough Council.

Under Section 102 of the Local Government Act 1972, the Local Government Act 2000 and regulations made under it, the local authorities created a Joint Committee to discharge the executive functions of the AONB, supported by an AONB Partnership and other subgroups.

The structure of the current governance arrangements for the Clwydian Range and Dee Valley AONB can be summarised in the following chart:



Two Council Executive members from each local authority have been appointed to the Joint Committee. The Committee has only met twice to date.

AONB Partnership members have also now been appointed by the Joint Committee following an open recruitment and application process. A total of 38 high quality applications were received for a total of 16 seats, with the remaining seats reserved for three county council member representatives nominated by each of the respective local authorities. Places on the Partnership Committee are linked to interest areas (Land management, Rural, Urban, Landscape, Recreation, Historic Environment, Natural Environment, and Business) to ensure that a balance of membership is sustained. Three places are reserved for individual interest. The first meeting of the Clwydian Range and Dee Valley Partnership Committee will be held on the 15<sup>th</sup> of May 2015 and it is therefore not possible to provide actual evidence of its operational success.

Nevertheless it is felt that the current governance structure positions the AONB well to serve its statutory purpose and deliver against the management plan. Denbighshire County Council is represented at the highest level and 5 (possibly 6) elected members are involved.

The current structure has the benefit of senior political commitment from each local authority area, coupled with community engagement achieved through the Partnership. The governance arrangement is further strengthened by an Officer Working Group which also has representation from each local authority and includes other agencies, such as Natural Resources Wales. National bodies and groups are able to feed into the governance arrangement as advisors or within subject or sub-groups.

Within the governance structure the annual AONB open meeting provides the opportunity for people with an interest in Clwydian Range and Dee Valley AONB to share their views and provide information to shape future work plans, which would include local communities from within and outside of the area, politicians, landowners, user groups and many more.

Within a national context, the Clwydian Range and Dee Valley AONB staff and committee members regularly meet with other AONBs across England and Wales to share good practice and discuss solutions to shared issues. Natural Resources Wales co-ordinates meetings for protected landscapes and provide valuable advice and guidance on both a national and local level. The National Association for Areas of Outstanding Natural Beauty (NAAONB) also hosts meetings and a national conference for Areas of Outstanding Natural Beauty. In addition, the Association hosts a useful online Basecamp discussion forum, where AONBs can pose questions and generate debates. The forum is an excellent mechanism to avoid the duplication of work and also to share experience. Training events have been provided by the NAAONB, with one of the most recent held at Plas Tan y Bwlch in Snowdonia, targeted towards Welsh AONB Committee Members. As employees of the lead authority, staff engage with all of the above opportunities.

Denbighshire County Council also acknowledges that through the AONB activities, the County makes an contribution on the international landscape stage as a member of Europarc. It has secured the Europarc Sustainable Tourism Charter in the past and in partnership with others, has received a Bronze Medal Europa Nostra Cultural Award for the contribution of the Heather and Hill forts Landscape Partnership Scheme.

Denbighshire County Council feels that the current governance structure of the AONB provides an excellent framework to meet its statutory duty and deliver its management plan within a local, national and international context.

Other matters worthy to note during the governance review are:

- Some governance models available to AONBs, for example Conservation Boards and Limited Liability Companies have the disadvantage of not being VAT exempt, which would effectively result in a 20% decrease in funding.
- Any changes in governance arrangement proposed must be fit for purpose. Committees, authorities or Conservations Boards are appropriate for some areas where the scale is larger. In a Welsh setting, DCC do not feel the scale is right for what would be cumbersome and unwieldy governance structures with too many members. A maximum size of 12 members for the main committee is suggested.
- Additional resources would need to be made available for designated landscapes to support changes in governance resulting from the review.

**Question 2. In light of the Review's Stage One report and recommendations and the Minister for Natural Resources' written statement (dated the 4<sup>th</sup> of March) what is your vision and ambition for the direction of Wales' designated landscapes in the medium to long term?**

Denbighshire County Council support the vision for the Clwydian Range and Dee Valley AONB as set out in the management plan. This vision is .....

A dynamic landscape with flourishing communities and a thriving local economy; A landscape that supports a rich biological and cultural resource, delivering benefits for the communities, economies and ecosystems far beyond its boundary.

A landscape that is cherished as a peaceful haven by those living in and visiting the AONB and is treasured for its open spaces and commanding views. Its special features and the benefits they provide are understood and appreciated by all.

An AONB that is managed through sound and effective partnerships which ensure that communities and visitors are fully engaged in decision making and are empowered to have a stake in their local landscape and invest in its future.

For the Clwydian Range and Dee Valley AONB to be a flagship for sustainable development and forward planning with its international protection as a category V protected landscapes making it influential on an international, national and local stage.

In attaining the AONB vision, Denbighshire County Council supports Recommendation 5 of the First Stage of the Designated Landscape for one statutory purpose and duty for both AONBs and National Parks and supports the three interlocking statutory purposes.

**Question 3. From a governance perspective, what factors are preventing and/or likely to prevent designated landscapes from achieving the vision you set out in response to question 2?**

Denbighshire County Council believes the achievement of the vision for the Clwydian Range and Dee Valley AONB is linked to resources. How much of the vision is achieved is dependent on Welsh Government funding as delivered through Natural Resources Wales and the local authorities. The Sustainable Development Fund has been very beneficial to lever additional resources towards the delivery of the AONB vision, especially through the work of partners at a local level. AONB Officers have been very successful in the past in securing additional resources from European and Lottery Funds. However these sources of funding are very resource heavy to attain, by nature ad hoc and becoming increasingly competitive due to the current economic climate.

Further, Denbighshire County Council believes there is a direct link between committing resources and the commitment to joint working by the partners. As resources become scarcer, there is a danger partners will reduce their commitments to the partnership or even disengage completely. The strength of the partnerships and the collaborative working within them will be tested at these times and strong governance is vital to secure continued support. DCC are committed to the partnership of the Clwydian Range and Dee Valley AONB and believe the current structure is as resilient as it can be to this kind of pressure.

**Question 4. From a governance perspective, what factors will allow designated landscapes to achieve the vision and ambition you set out in response to question 2?**

The vision for the Clwydian Range and Dee Valley AONB can only be delivered in partnership with others. It depends on effective partnerships between a number of departments within the local authority, between local authorities and also external organisations and the local community. It is the enthusiasm of the people, often driven by a passion for the special qualities of the Clwydian Range and Dee Valley landscape and its communities that underpins the delivery of the management plan and vision for the area. DCC believes the governance structure reflects this commitment to partnerships and delivers the passion at a community level.

**Question 5. Are there other designated landscape/protected area governance models/approaches you wish to bring to the attention of the Review?**

Denbighshire County Council considers local authority support to be fundamental to the local AONB partnerships and the delivery of the AONB management plan. It should be regarded as one of the real strengths underpinning AONB management. However, occasionally, AONB partnerships are required to consider national perspectives in their decision making. To this end, national representation on the AONB Partnership might be beneficial and an idea worthy of further investigation.

A copy of the Clwydian Range and Dee Valley Draft Management Plan, State of the Environment Report and latest Annual Report is available in support of this response on request.

Please do not hesitate to get in touch with Huw Rees, Countryside and Heritage Services Manager, Denbighshire County Council should you require any further information with regards to this response-, [huw.rees@denbighshire.gov.uk](mailto:huw.rees@denbighshire.gov.uk) .

Yours faithfully

**Councillor Huw Jones**

Lead member, Leisure, Youth, Tourism and Rural Development  
Denbighshire County Council

DRAFT



DRAFT

Mae tudalen hwn yn fwriadol wag

## Appendix 3

# Review of Designated Landscapes in Wales Stage 2 Call for Evidence 14 May 2015

Equality Impact Assessment

# Review of Designated Landscapes in Wales Stage 2 Call for Evidence

**Contact:** Huw Rees, Countryside, Environment

**Updated:** 28<sup>th</sup> April 2015

## 1. What type of proposal / decision is being assessed?

Other

## 2. What is the purpose of this proposal / decision, and what change (to staff or the community) will occur as a result of its implementation?

To consider the DCC response to the Review of Designated Landscapes in Wales. No change will occur as a result of this consideration.

## 3. Does this proposal / decision require an equality impact assessment? If no, please explain why.

*Please note: if the proposal will have an impact on people (staff or the community) then an equality impact assessment **must** be undertaken*

No

The response proposes a view to the questions posed by the Review Board. No change will result from the view submitted.

## 4. Please provide a summary of the steps taken, and the information used, to carry out this assessment, including any engagement undertaken

*(Please refer to section 1 in the toolkit for guidance)*

<Type here>

## 5. Will this proposal / decision have a positive impact on any of the protected characteristics (age; disability; gender-reassignment; marriage and civil partnership; pregnancy and maternity; race; religion or belief; sex; and sexual orientation)?

*(Please refer to section 1 in the toolkit for a description of the protected characteristics)*

<Please summarise any likely positive impact and identify which protected characteristics will benefit>

6. Will this proposal / decision have a disproportionate negative impact on any of the protected characteristics (age; disability; gender-reassignment; marriage and civil partnership; pregnancy and maternity; race; religion or belief; sex; and sexual orientation)?

<Please summarise any disproportionate negative impact and identify which protected characteristics will be affected>

7. Has the proposal / decision been amended to eliminate or reduce any potential disproportionate negative impact? If no, please explain why.

<Please Select> | <If yes, please provide detail>

8. Have you identified any further actions to address and / or monitor any potential negative impact(s)?

<Please Select> | <If yes please complete the table below. If no, please explain here>

Action(s)	Owner	By when?
<Please describe>	<Enter Name>	<DD.MM.YY>
<Please describe>	<Enter Name>	<DD.MM.YY>
<Please describe>	<Enter Name>	<DD.MM.YY>
<Please describe>	<Enter Name>	<DD.MM.YY>
<Unrestrict editing to insert additional rows>	<Enter Name>	<DD.MM.YY>

## 9. Declaration

Every reasonable effort has been made to eliminate or reduce any potential disproportionate impact on people sharing protected characteristics. The actual impact of the proposal / decision will be reviewed at the appropriate stage.

Review Date: 28<sup>th</sup> April  
2015

Name of Lead Officer for Equality Impact Assessment	Date
Huw Rees	28/04/2015

**Please note you will be required to publish the outcome of the equality impact assessment if you identify a substantial likely impact.**

Tudalen 77

Mae tudalen hwn yn fwriadol wag

<b>Adroddiad i'r:</b>	<b>Pwyllgor Archwilio Partneriaethau</b>
<b>Dyddiad y Cyfarfod:</b>	<b>14 Mai 2015</b>
<b>Awdur yr Adroddiad:</b>	<b>Cydlynnydd Archwilio</b>
<b>Teitl:</b>	<b>Rhaglen Waith Archwilio</b>

---

## 1. Am beth mae'r adroddiad yn sôn?

Mae'r adroddiad yn cyflwyno drafft rhaglen waith i'r dyfodol y Pwyllgor Archwilio Partneriaethau i'r aelodau ei hystyried.

## 2. Beth yw'r rheswm dros lunio'r adroddiad hwn?

Gofyn i'r Pwyllgor adolygu a chytuno ar ei raglen waith i'r dyfodol, a rhoi'r wybodaeth ddiweddaraf i aelodau ar faterion perthnasol.

## 3. Beth yw'r Argymhellion?

Bod y Pwyllgor yn:

- 3.1 ystyried yr wybodaeth a ddarparwyd ac yn cymeradwyo, diwygio neu'n newid ei raglen gwaith i'r dyfodol fel y gwêl yn briodol; a
- 3.2 penodi/ailbenodi cynrychiolwyr i wasanaethu ar Grwpiau Herio Perfformiad y Cyngor.

## 4. Manylion am yr adroddiad.

- 4.1 Mae Erthygl 6 Cyfansoddiad Cyngor Sir Ddinbych yn nodi cylch gorchwyl, swyddogaethau ac aelodaeth pob Pwyllgor Archwilio, tra bo rheolau'r gweithdrefnau i bwyllgor archwilio wedi'u gosod yn Rhan 4 y Cyfansoddiad.
- 4.2 Mae'r Cyfansoddiad yn amodi bod yn rhaid i bwyllgorau archwilio'r Cyngor baratoi ac adolygu rhaglen ar gyfer eu gwaith i'r dyfodol. Drwy adolygu a blaenoriaethu materion mae modd i aelodau sicrhau fod y rhaglen waith yn cyflwyno rhaglen dan arweiniad yr aelodau.
- 4.3 Arfer sydd wedi'i fabwysiadu yn Sir Ddinbych ers nifer o flynyddoedd yw bod pwyllgorau archwilio'n cyfyngu ar nifer yr adroddiadau a ystyrir mewn unrhyw gyfarfod i uchafswm o bedwar, yn ogystal ag adroddiad rhaglen waith y Pwyllgor ei hun. Nod y dull hwn yw hwyluso cael trafodaeth fanwl ac effeithiol ar bob pwnc.
- 4.4 Yn y blynyddoedd diweddar mae Llywodraeth Cymru a Swyddfa Archwilio Cymru wedi tynnu sylw at yr angen i gryfhau rôl archwilio ar draws llywodraeth leol a gwasanaethau cyhoeddus yng Nghymru, gan gynnwys defnyddio archwilio fel modd o ymgysylltu â phreswylwyr a

defnyddwyr gwasanaeth. Wrth fynd ymlaen disgwylir i archwilio ymgysylltu'n well ac yn amlach â'r cyhoedd gyda golwg ar sicrhau penderfyniadau gwell a fydd yn y pen draw yn arwain at well canlyniadau i ddinasyddion. Yn y dyfodol, bydd Swyddfa Archwilio Cymru yn mesur effeithiolrwydd archwilio wrth gyflawni'r disgwyliadau hyn.

4.5 Gan ystyried y weledigaeth genedlaethol ar gyfer archwilio ac ar yr un pryd ganolbwyntio ar flaenoriaethau lleol, mae'r Grŵp Cadeiryddion ac Is-gadeiryddion Archwilio (GCIGA) wedi argymhell yn ddiweddar y dylai pwyllgorau archwilio'r Cyngor, wrth benderfynu ar eu rhaglenni gwaith, ganolbwyntio ar y meysydd allweddol canlynol:

- arbedion ar y gyllideb;
- cyflawni Amcanion y Cynllun Corfforaethol (gyda phwyslais arbennig ar y modd o'u cyflawni yn ystod cyfnod o galedi ariannol);
- unrhyw eitemau eraill a gytunwyd gan y Pwyllgor Archwilio (neu'r GCIGA) fel blaenoriaeth uchel (yn seiliedig ar y meini prawf profion PAPER - gweler ochr gefn y 'ffurflen gynnig aelodau' yn Atodiad 2 ) a;
- Materion brys, materion na ellir eu rhagweld neu faterion â blaenoriaeth uchel

#### Ffurflenni Cynnig ar gyfer Archwilio

4.6 Fel y crybwyllwyd ym mharagraff 4.2 uchod, mae Cyfansoddiad y Cyngor yn gofyn i bwyllgorau archwilio baratoi ac adolygu rhaglen ar gyfer eu gwaith i'r dyfodol. Er mwyn cynorthwyo'r broses o flaenoriaethu adroddiadau, os yw'r swyddogion o'r farn fod pwnc yn haeddu'r amser i gael ei drafod ar raglen fusnes y Pwyllgor, mae'n rhaid iddynt wneud cais ffurfiol i'r Pwyllgor i ystyried derbyn adroddiad ar y pwnc hwnnw. Gwneir hyn trwy gyflwyno 'ffurflen gynnig' sy'n egluro pwrpas, pwysigrwydd a chanlyniadau posibl y pynciau a awgrymir. Does dim un ffurflen gynnig wedi dod i law oddi wrth swyddog i'w ystyried yn y cyfarfod cyfredol.

4.7 Er mwyn gwneud gwell defnydd o amser archwilio drwy ganolbwyntio adnoddau pwyllgorau i archwilio testunau'n fanwl, gan ychwanegu gwerth drwy'r broses o wneud penderfyniadau a sicrhau gwell canlyniadau ar gyfer preswylwyr, penderfynodd y GCIGA y dylai'r aelodau, yn ogystal â swyddogion, gwblhau 'ffurflenni cynnig ar gyfer archwilio' yn amlinellu pam eu bod yn credu y byddai'r testun yn elwa o fewnbwn archwilio. Gellir gweld copi o 'ffurflen gynnig' yn Atodiad 2. Mae ochr gefn y ffurflen hon yn cynnwys siart lif sy'n rhestru'r cwestiynau y dylai aelodau eu hystyried wrth baratoi i gynnig eitem ar gyfer archwilio, ac y dylai pwyllgorau eu gofyn wrth benderfynu ar addasrwydd testun arfaethedig i'w gynnwys ar raglen gwaith i'r dyfodol archwilio. Os, ar ôl cwblhau'r broses hon, y penderfynir nad yw'r testun yn addas i'w archwilio'n ffurfiol gan bwyllgor archwilio, yna gellir ystyried dulliau eraill o rannu'r wybodaeth neu archwilio'r mater e.e.



darparu 'adroddiad gwybodaeth', neu os yw'r mater yn un o natur leol gellir ei archwilio gan y Grŵp Ardal Aelodau (GAA) perthnasol. Yn y dyfodol ni fydd unrhyw eitemau'n cael eu cynnwys ar raglen gwaith i'r dyfodol heb i 'ffurflen gynig ar gyfer archwilio' gael ei chwblhau, ac i'r testun gael ei gymeradwyo i'w gynnwys ar y rhaglen gan un ai'r Pwyllgor neu'r GCIGA. Bydd cymorth ar gael i lenwi'r ffurflenni gan y Cydlynnydd Archwilio.

#### Cyfarfod gyda Bwrdd Iechyd Prifysgol Betsi Cadwaladr

- 4.8 Yn ystod cyfarfod mis Mawrth 2015 penderfynodd y Pwyllgor drefnu cyfarfod arbennig gyda chynrychiolwyr o Fwrdd Iechyd Prifysgol Betsi Cadwaladr (BIPBC) ym mis Medi 2015. Mae cynrychiolwyr BIPBC wedi cadarnhau eu bod ar gael i fynychu cyfarfod ar 17 Medi. Gofynnir i'r Aelodau nodi'r dyddiad newydd yn eu dyddiaduron.

#### Awdurdod Tân ac Achub Gogledd Cymru

- 4.9 Roedd y Pwyllgor wedi gwahodd Awdurdod Tân ac Achub Gogledd Cymru i fynychu cyfarfod mis Gorffennaf i drafod effaith ac effeithiolrwydd cyfraniad cynyddol y Cyngor at gyllideb flynyddol yr Awdurdod Tân ac Achub. Yn anffodus, nid ydynt yn gallu mynychu ond maent wedi nodi eu bwriad i ymgynghori ar eu cynllun gwella ar gyfer blwyddyn ariannol 2016/17 yn ystod yr hydref. O ganlyniad, mae'r eitem ohono wedi ei haildrefnu ar gyfer mis Tachwedd 2015.

#### Rhaglen Waith i'r Dyfodol y Cabinet

- 4.10 Wrth benderfynu ar eu rhaglen waith i'r dyfodol mae'n bwysig fod pwyllgorau archwilio yn ystyried amserlen rhaglen waith y Cabinet. Ar gyfer y diben hwn, mae rhaglen waith y Cabinet wedi ei chynnwys yn Atodiad 3.

#### Datblygiad Penderfyniadau'r Pwyllgor

- 4.11 Yn Atodiad 4 mae tabl yn crynhoi penderfyniadau diweddar y Pwyllgor ac yn cynghori aelodau am eu gweithrediad.

### **5. Grwpiau Herio Gwasanaethau**

Oherwydd y cynhaliwyd y Cyngor Blynnyddol ar 12 Mai gofynnwyd i bwyllgorau archwilio, yn unol â'r gweithdrefnau arferol, benodi/ailbenodi aelodau i wasanaethu ar Grwpiau Herio Gwasanaeth y Cyngor. Ynghlwm wrth Atodiad 5 er gwybodaeth i'r aelodau, mae'r rhestr gyfredol o gynrychiolwyr pwyllgor. Bydd Aelodau'n sylwi bod enwau rhai o'r gwasanaethau wedi newid yn ystod y flwyddyn ddiwethaf.

### **6. Grŵp Cadeiryddion ac Is-Gadeiryddion Archwilio**

- 6.1 Dan drefniadau archwilio'r Cyngor mae Grŵp Cadeiryddion ac Is-Gadeiryddion Archwilio (GCIGA) yn gweithredu fel pwyllgor cydlynnydd. Bu i'r grŵp gyfarfod ar 2 Ebrill ac yn y cyfarfod hwnnw, mewn ymateb i gais gan Aelod Arweiniol Hamdden, Ieuenctid, Twristiaeth a Datblygu

Gwledig, gofynnwyd i'r pwyllgor yma ystyried ymgynghoriad ar Gyfnod 2 yr 'Adolygiad o Dirweddau Dynodedig yng Nghymru' yn y cyfarfod hwn. Yn ogystal, mewn ymateb i gais gan swyddog, gofynnwyd i'r pwyllgor ystyried adroddiad ar Gynllun Lleol Cefnogi Pobl Sir Ddinbych 2016 -19 yn ei gyfarfod ym mis Hydref 2015 (gweler atodiad 1).

**7. Sut mae'r penderfyniad yn cyfrannu at y Blaenoriaethau Corfforaethol?**

Bydd archwilio effeithiol yn gymorth i'r Cyngor gynnal y blaenoriaethau corfforaethol yn unol ag anghenion cymunedau a dymuniadau trigolion. Bydd datblygu ac adolygu'r rhaglen waith gydlynol yn barhaus yn cynorthwyo'r Cyngor i ddarparu ei flaenoriaethau corfforaethol, i wella canlyniadau i breswylwyr tra hefyd yn dygymod â thoriadau llym yn y gyllideb.

**8. Beth yw'r prif gasgliadau o'r Asesiad o'r Effaith ar Gydraddoldeb a gynhaliwyd ar y penderfyniad? Dylid cynnwys templed yr Asesiad o Effaith ar Gydraddoldeb a gwblhawyd fel atodiad i'r adroddiad.**

Ni chynhaliwyd Asesiad o Effaith ar Gydraddoldeb er diben yr adroddiad hwn gan nad yw ystyried rhaglen waith i'r dyfodol y Pwyllgor yn debygol o gael effaith andwyol neu annheg ar bobl sy'n rhannu nodweddion sydd wedi'u diogelu.

**9. Faint fydd hyn yn costio a sut bydd yn effeithio ar wasanaethau eraill?**

Mae'n bosib y bydd yn rhaid i wasanaethau neilltuo amser swyddog i gynorthwyo'r Pwyllgor gyda'r eitemau a nodwyd yn y rhaglen waith a chydag unrhyw gam gweithredu yn dilyn ystyried yr eitemau hynny.

**10. Pa ymgynghori sydd wedi digwydd?**

Does dim angen cynnal ymgynghoriad ar yr adroddiad hwn. Fodd bynnag, mae'r adroddiad ei hun a'r ystyriaeth a roir gan y Pwyllgor i'w raglen waith ar gyfer y dyfodol yn gyfystyr ag ymgynghoriad gyda'r Pwyllgor o ran ei raglen waith.

**11. Pa risgiau sy'n bodoli ac a oes unrhyw beth y gallwn ei wneud i'w lleihau?**

Nid oes risg wedi ei ganfod o ran y Pwyllgor yn ystyried ei raglen waith. Fodd bynnag, wrth adolygu ei raglen waith yn rheolaidd gall y Pwyllgor sicrhau bod meysydd sy'n peri pryder yn cael eu hystyried a'u harchwilio fel y maent yn dod i'r amlwg a bod argymhellion yn cael eu gwneud er mwyn mynd i'r afael â nhw.

## 12. **Grym i wneud Penderfyniad**

Yn unol ag Erthygl 6.3.7 Cyfansoddiad y Cyngor mae'n rhaid i bwyllgorau archwilio'r Cyngor baratoi rhaglen waith a'i hadolygu.

**Swyddog Cyswllt:** Cydlynnydd Archwilio

Rhif ffôn: (01824) 712554

E-bost: [dcc\\_admin@denbighshire.gov.uk](mailto:dcc_admin@denbighshire.gov.uk)

Mae tudalen hwn yn fwriadol wag

Note: Items entered in italics have not been approved for submission by the Committee. Such reports are listed here for information, pending formal approval.

Meeting	Lead Member(s)	Item (description / title)	Purpose of report	Expected Outcomes	Author	Date Entered
25 June	<b>Cllr. David Smith</b>	1. Regional Emergency Planning Service	To review the operation, management and financial benefits of the new partnership 12 months after its establishment	A guarantee that Denbighshire's residents will be safe and supported in the County experienced a natural or man-made disaster	Rebecca Maxwell	June 2014
	<b>Cllr. David Smith</b>	2. CCTV Savings Update Report	To consider the progress made to date in devising an exit strategy and securing alternative solutions for the delivery of a CCTV Service for Rhyl, Prestatyn and Rhuddlan following the cessation of Council funding from April 2016 onwards	The establishment of viable alternative provision for the CCTV which will satisfy stakeholders	Graham Boase/Emlyn Jones	November 2014 (allocated by SCVCG in January 2015 following initial report to Performance Scrutiny Committee – November 2014)
	<b>Cllr. Eryl Williams and Cllr. Bobby Feeley</b>	3. Effectiveness of partnership working with the Education Service  <b>[Education]</b>	To evaluate the effectiveness of partnership working arrangements between internal and external agencies and the County's education service (e.g. Bridge, TAF etc. – following concerns raised at a recent SSMG meeting)	More effective working and use of resources between all partner organisations and stakeholders to realise better outcomes for pupils	Karen Evans	Member request via Scrutiny Chairs and Vice-Chairs Group (February 2015)

Meeting	Lead Member(s)	Item (description / title)	Purpose of report	Expected Outcomes	Author	Date Entered
				and students. Ensure that requests to various organisations are responded to on time and that various agencies do not duplicate service provision		
30 July		1. Denbighshire Communities First Cluster Report	To examine the work of the Communities First Lead Delivery Body in delivering its programme of work to improve the lives of citizens in the County's most deprived areas	Formulation of recommendations to the Communities First Cluster Advisory Board to ensure that the programme delivers its intended programme of work and improve the lives of the County's most vulnerable citizens and contributes to significantly improved the most deprived communities	Liz Grieve	SCVCG February 2015
	<b>Cllr. David Smith</b>	2. Community Safety Partnership	To detail the Partnership's achievement in delivering its	Effective monitoring of the CSP's	Alan Smith/Liz Grieve/Steve	September 2014

Meeting	Lead Member(s)	Item (description / title)	Purpose of report	Expected Outcomes	Author	Date Entered
		[Crime and Disorder Scrutiny Committee]	2014/15 action plan and its progress to date in delivering its action plan for 2015/16 and its work in complementing that of the Denbighshire Single Integrated Plan and the LSCB. The report to include financial sources and the progress made in spending the allocated funding.	delivery of its action plan for 2014/15 and its progress to date in delivering its plan for 2015/16 will ensure that the CSP delivers the services which the Council and local residents require	Parker	
17 September	<b>Cllr. Bobby Feeley</b>	1. Betsi Cadwaladr University Health Board's Three Year Plan 2015-2018	To consider progress to date with the implementation and delivery of the Health Board's new three year plan	Better planning and coordination of health and social care work and associated funding	Sally Baxter/Nicola Stubbins	March 2015
	<b>Cllr. Bobby Feeley</b>	2. BCUHB in Conwy & Denbighshire	To consider the progress made with the introduction of the new local management structure for the Conwy & Denbighshire	Identification of any early problems with the introduction of the new management structure and the interface between Health and Social Care	BCUHB/Nicola Stubbins/Phil Gilroy	March 2015
8 October (Rhyl)	<b>Cllr. Bobby Feeley</b>	1. Single Point of Access	To consider the progress made with the establishment of the Single Point of Access Service	Identification of any problems associated with the Service and actions to address	Phil Gilroy/Cathy Curtis-Nelson	April 2014

Meeting	Lead Member(s)	Item (description / title)	Purpose of report	Expected Outcomes	Author	Date Entered
				them		
	<b>Leader(?)</b>	2. Wellbeing Plan Annual Report	To consider the progress made to date with the delivery of the Local Service Board's Annual Wellbeing Plan	To evaluate the progress made to date with the Plan's delivery and identify any gaps or shortcomings with its delivery in order to recommend solutions of courses of action that will help improve outcomes for residents	Liz Grieve	February 2015
	<b>Councillor Bobby Feeley</b>	3. Denbighshire Supporting People Local Plan 2016-19	To consult with members on the allocation of the Supporting People Programme Grant, including the management of the minimum 5% cut to the County's grant and its impact on Council services	Pre-decision scrutiny and an overall evaluation of the impact of the grant cut on residents and the Council	Katie Newe	By SCVCG April 2015
26 November	<b>Cllr. Bobby Feeley</b>	1. Protection of Vulnerable Adults Annual Report 2014/15	To consider the POVA annual report, and information in place to meet the statutory requirements of the Social Services and Well-being Act 2014 and an evaluation of the financial and resource impact	An evaluation of whether the Authority is meeting its statutory duty with respect to adult safeguarding and has sufficient	Phil Gilroy/Alaw Pierce/Nerys Tompsett	December 2014



Meeting	Lead Member(s)	Item (description / title)	Purpose of report	Expected Outcomes	Author	Date Entered
			of the Supreme Court's 2014 Judgement on deprivation of liberty on the Service and its work	resources to undertake this work along with the additional work in the wake of the Supreme Court's judgement		
		2. North Wales Fire and Rescue Authority (tbc)	To examine the impact and effectiveness of the increased contribution by the Council to the NWFRA's annual budget and consult on their improvement plan for the 2016/17 financial year	An evaluation of the impact and effectiveness of the increased contribution on the safety of residents and on Council services	NWFRA	December 2014 (rescheduled April 2015)
14 January 2016						
25 February						
14 April						
26 May						
7 July						
6 Oct 2016	<b>Cllr. Julian Thompson-Hill</b>	1. Commercial Partnership for the Revenues and	To review the Partnership's progress and in particular the new business element of the	An evaluation: (i) of whether the financial and	Paul McGrady/Rod Urquhart/Jackie	December 2014 (by County Council in line

Tudalen 90

Meeting	Lead Member(s)	Item (description / title)	Purpose of report	Expected Outcomes	Author	Date Entered
		Benefits Service	proposal and the Welsh Language service provision	commercial benefits of the partnership agreement have been realised; and (ii) that the service is delivering the level of service expected which conforms to the Council's relevant policies in lines with the Heads of Terms Agreement	Walley	with Cabinet's recommendation – allocated to the Committee by the SCVCG January 2015)
24 November						

**Future Issues**

Item (description / title)	Purpose of report	Expected Outcomes	Author	Date Entered

Citizens Panel (mid 2015)	To outline the proposed composition of the Panel and the recruitment and appointment process for appointing its members	The formation of a fair and equitable Panel which will form part of the governance arrangements for the Social Service and Health Programme Board and ensure that citizens and service-users views are heard and acted upon	Nicola Stubbins	November 2014
Update following conclusion of inquiry undertaken by the National Crime Agency in to historic abuse in North Wales Children's' Care Homes	To update the Committee of the outcome of the National Crime Agency (NCA) investigation in to the abuse of children in the care of the former Clwyd County Council, and to determine whether any procedures require revision.	Determination of whether any of the Council's safeguarding policies and procedures need to be revised in light of the NCA's findings	Nicola Stubbins	November 2012

**For future years**


**Information/Consultation Reports**

Information / Consultation	Item (description / title)	Purpose of report	Author	Date Entered
Information (April 2015)	Cat's Paw Theatre Tour in High Schools	To provide an evaluation of the Theatre project in educating secondary school children in relation to exploring safe relationships	Siân Taylor	September 2014

30//04/15 - RhE

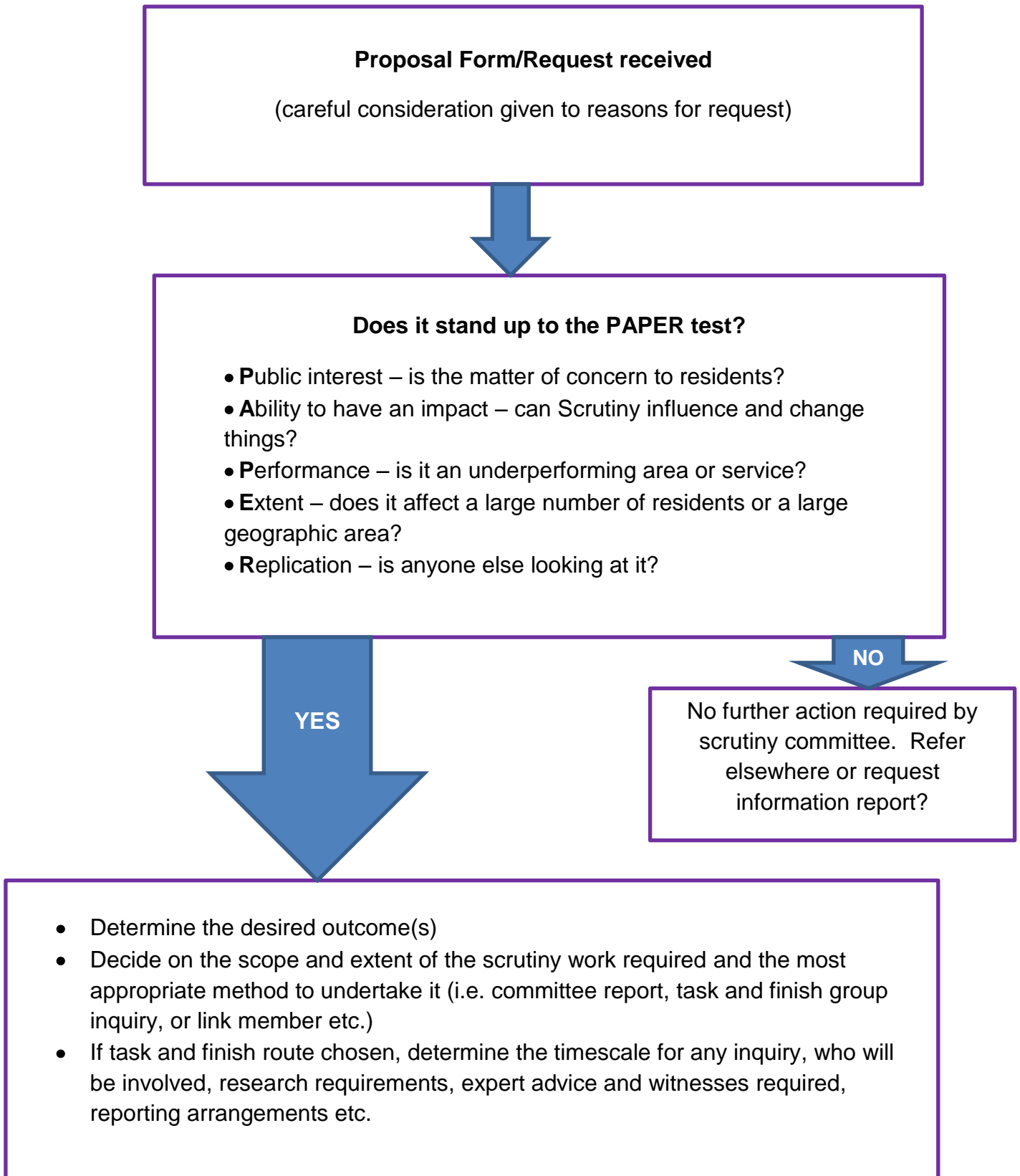
**Note for officers – Committee Report Deadlines**

Meeting	Deadline	Meeting	Deadline	Meeting	Deadline
25 June	<b>11 June</b>	30 July	<b>16 July</b>	17 September	<b>3 September</b>

Partnerships Scrutiny Work Programme.doc

<b>Member Proposal Form for Scrutiny Forward Work Programme</b>	
<b>NAME OF SCRUTINY COMMITTEE</b>	
<b>TIMESCALE FOR CONSIDERATION</b>	
<b>TOPIC</b>	
<b>What needs to be scrutinised (and why)?</b>	
<b>Is the matter one of concern to residents/local businesses?</b>	<b>YES/NO</b>
<b>Can Scrutiny influence and change things?</b> (if 'yes' please state how you think scrutiny can influence or change things)	<b>YES/NO</b>
<b>Does the matter relate to an underperforming service or area?</b>	<b>YES/NO</b>
<b>Does the matter affect a large number of residents or a large geographical area of the County</b> (if 'yes' please give an indication of the size of the affected group or area)	<b>YES/NO</b>
<b>Is the matter linked to the Council's Corporate priorities</b> (if 'yes' please state which priority/priorities)	<b>YES/NO</b>
<b>To your knowledge is anyone else looking at this matter?</b> (If 'yes', please say who is looking at it)	<b>YES/NO</b>
<b>If the topic is accepted for scrutiny who would you want to invite to attend e.g. Lead Member, officers, external experts, service-users?</b>	
<b>Name of Councillor/Co-opted Member</b>	
<b>Date</b>	

## Consideration of a topic's suitability for scrutiny



Cabinet Forward Work Plan

Appendix 3

Tudalen 95

Meeting	Item (description / title)		Purpose of report	Cabinet Decision required (yes/no)	Author – Lead member and contact officer
2 June	1	Finance Report	To update Cabinet on the current financial position of the Council	Tbc	Councillor Julian Thompson-Hill / Paul McGrady
	2	Ruthin Primary Proposals	To consider the formal consultation reports following the publication of proposals for the amalgamation of Ysgol Llanfair DC and Ysgol Pentrecelyn and the closure of Ysgol Rhewl and to consider whether to publish the relevant statutory notices.	Yes	Councillor Eryl Williams / Jackie Walley
	3	Affordable Housing Task and Finish Group	To report the key findings and recommendations of the Affordable Housing Task and Finish Group	Yes	Cllr David Smith / Angela Loftus / Sue Lewis
	4	Business Rates Write Offs	To seek approval for uncollectible Business Rates Debts to be written off	Yes	Cllr Julian Thompson-Hill / Rod Urquhart
	5	Items from Scrutiny Committees	To consider any issues raised by Scrutiny for Cabinet's attention	Tbc	Scrutiny Coordinator

Cabinet Forward Work Plan

Tudalen 96

Meeting		Item (description / title)	Purpose of report	Cabinet Decision required (yes/no)	Author – Lead member and contact officer
<b>30 June</b>	1	Finance Report	To update Cabinet on the current financial position of the Council	Tbc	Councillor Julian Thompson-Hill / Paul McGrady
	2	Final Outturn Report	To consider the final revenue outturn position for 2014/15	Tbc	Councillor Julian Thompson-Hill / Paul McGrady
	3	Corporate Plan Performance Report 2014/15 Q4	To consider progress against the Corporate Plan	Tbc	Cllr Barbara Smith / Liz Grieve
	4	Town & Area Plans	To consider the allocation of funding for priority projects	Yes	Cllr Hugh Evans / Tom Booty
	5	Eisteddfod yr Urdd	To recommend support for the return of the National Urdd Eisteddfod.	N/A	Cllr Huw Jones / Jamie Groves / Gareth Watson
	6	Items from Scrutiny Committees	To consider any issues raised by Scrutiny for Cabinet's attention	Tbc	Scrutiny Coordinator
<b>28 July</b>	1	Finance Report	To update Cabinet on the current financial position of the Council	Tbc	Councillor Julian Thompson-Hill / Paul McGrady
	2	The Future of In-house Care Services	To consider the results of the consultation with existing users of in-house care services	Yes	Councillor Bobby Feeley / Phil Gilroy



Cabinet Forward Work Plan

Meeting	Item (description / title)		Purpose of report	Cabinet Decision required (yes/no)	Author – Lead member and contact officer
	3	Car Park Charges	To give members the opportunity to decide which car park charging regime they would like to see implemented across the county.	Tbc	Councillor David Smith / Steve Parker / Mike Jones
	4	Items from Scrutiny Committees	To consider any issues raised by Scrutiny for Cabinet's attention	Tbc	Scrutiny Coordinator
<b>29 September</b>	1	Finance Report	To update Cabinet on the current financial position of the Council	Tbc	Councillor Julian Thompson-Hill / Paul McGrady
	2	Corporate Plan Performance Report 2015/16 Q1	To consider progress against the Corporate Plan	Tbc	Cllr Barbara Smith / Liz Grieve
	3	Items from Scrutiny Committees	To consider any issues raised by Scrutiny for Cabinet's attention	Tbc	Scrutiny Coordinator
<b>27 October</b>	1	Finance Report	To update Cabinet on the current financial position of the Council	Tbc	Councillor Julian Thompson-Hill / Paul McGrady
	2	Items from Scrutiny Committees	To consider any issues raised by Scrutiny for Cabinet's attention	Tbc	Scrutiny Coordinator

## Cabinet Forward Work Plan

Tudalen 98

Meeting		Item (description / title)	Purpose of report	Cabinet Decision required (yes/no)	Author – Lead member and contact officer
<b>24 November</b>	1	Finance Report	To update Cabinet on the current financial position of the Council	Tbc	Councillor Julian Thompson-Hill / Paul McGrady
	2	Items from Scrutiny Committees	To consider any issues raised by Scrutiny for Cabinet's attention	Tbc	Scrutiny Coordinator
<b>15 December</b>	1	Finance Report	To update Cabinet on the current financial position of the Council	Tbc	Councillor Julian Thompson-Hill / Paul McGrady
	2	Corporate Plan Performance Report 2015/16 Q2	To consider progress against the Corporate Plan	Tbc	Cllr Barbara Smith / Liz Grieve
	3	Items from Scrutiny Committees	To consider any issues raised by Scrutiny for Cabinet's attention	Tbc	Scrutiny Coordinator

### Note for officers – Cabinet Report Deadlines

<i>Meeting</i>	<i>Deadline</i>	<i>Meeting</i>	<i>Deadline</i>	<i>Meeting</i>	<i>Deadline</i>
<i>April</i>	<b>14 April</b>	<i>May</i>	<b>11 May</b>	<i>June</i>	<b>16 June</b>

Updated 30/04/15 - KEJ  
Cabinet Forward Work Programme.doc

## Progress with Committee Resolutions

Date of Meeting	Item number and title	Resolution	Progress
19 March 2015	3. Urgent Matters as Agreed by the Chair	<p><b>RESOLVED</b> – that representatives from Denbighshire Voluntary Services Council (DVSC) and the Rhyl Coastal Partnership be invited to a future meeting to discuss their role in supporting communities to access services and funding when non-statutory Council services were withdrawn.</p> <p><b>RESOLVED</b> – that a letter be sent to BCUHB's Chief Executive seeking clarity on the types of surgery that would be performed at Ysbyty Glan Clwyd in future.</p>	<p>Representatives will be attending the meeting on 14 May 2015 for this purpose – see agenda</p> <p>Letter sent to Professor Purt on 25 March 2015. Professor Purt replied on 30 April. Copies of both letters have been included in the Information Brief document to Committee members.</p>
	5. Co-ordination of Community Funding Streams	<p><b>RESOLVED</b> – that:-</p> <p>(a) subject to the above observations, to receive the information;</p> <p>(b) to note the Member's role within the community to identify projects and raise awareness of funding sources available to community groups with a view to maximising their benefits to the communities and support the delivery of the Council's corporate priorities and its Corporate Plan;</p> <p>(c) to recommend that representations be made to the Gwynt y Môr Community Funding Advisory Group that an Elected Member should in future serve on the</p>	<p>Representations were made with respect to (c) at the Advisory Group's last meeting where it was agreed that Sara Jones and Mark Dixon should sit on the Board for the time being. RWE mentioned the possibility of having 'rolling representatives' in time in</p>

		<p><i>relevant body that will oversee the award of grant funding; and</i></p> <p><i>(d) that the Committee's future meeting with representatives from Denbighshire Voluntary Services Council (DVSC) include a discussion on the organisation's role in assisting and supporting community groups to access advice on external community funding streams.</i></p>	<p>order to gain the viewpoints of a variety of individuals and benefit from their expertise.</p> <p>(d) see item 3 above</p>
--	--	---	---

Scrutiny Representatives on Service Challenge Groups 2014/15

Appendix 5

Service:	Communities	Partnerships	Performance
Economic & Business Development – Rebecca Maxwell			
Children & Family Services – Leighton Rees	Cllr Win Mullen-James	<b>Cllr. Jeanette Chamberlain-Jones</b>	Cllr. Arwel Roberts
Community Support Services – Phil Gilroy	Cllr Bob Murray	<b>Cllr. Ann Davies</b>	Cllr. David Simmons
Legal, HR & Democratic Services – Gary Williams	Cllr. James Davies	<b>Cllr. Meirick Lloyd Davies</b>	Cllr. Dewi Owens
Business Improvement & Modernisation – Alan Smith	Cllr. Cheryl Williams	<b>Cllr. Richard Davies</b>	Cllr. Dewi Owens
Education Services – Karen Evans	Cllr Huw Hilditch-Roberts	<b>Cllr. Joan Butterfield</b>	Cllr Arwel Roberts
Customers and Education Support – Jackie Walley	Cllr. Carys Guy-Davies	<b>Cllr. Pat Jones</b>	Cllr. Richard Davies
Communication, Marketing & Leisure – Jamie Groves	Cllr Joseph Welch	<b>Cllr. Dewi Owens</b>	Cllr. Geraint Lloyd Williams
Finance & Assets – Paul McGrady	Cllr. Peter Evans Cllr. Huw Hilditch-Roberts (sub)	<b>Cllr. Dewi Owens</b>	Cllr. Colin Hughes
Highways & Environmental Services – Steve Parker	Cllr. Rhys Hughes (sub: Cllr. Cefyn Williams)	<b>Cllr. Merfyn Parry</b>	Cllr. Meirick Lloyd Davies (sub: Cllr. Arwel Roberts)
Planning & Public Protection – Graham Boase	Cllr. Win Mullen-James (sub: Cllr. Cefyn Williams)	<b>Cllr. Raymond Bartley</b>	Cllr. Meirick LI Davies

Tudalen 101

Mae tudalen hwn yn fwiadol wag